

PDE1B Rabbit Polyclonal Antibody



CAB2102

Product Information

Size:

20uL, 50uL, 100uL, 200uL

Observed MW:

59kDa

Calculated MW:

59kDa/61kDa

Applications:

WB IHC IF

Reactivity:

Human, Mouse, Rat

Protein Background

The protein encoded by this gene belongs to the cyclic nucleotide phosphodiesterase (PDE) family, and PDE1 subfamily. Members of the PDE1 family are calmodulin-dependent PDEs that are stimulated by a calcium-calmodulin complex. This PDE has dual-specificity for the second messengers, cAMP and cGMP, with a preference for cGMP as a substrate. cAMP and cGMP function as key regulators of many important physiological processes. Alternatively spliced transcript variants encoding different isoforms have been described for this gene.

Immunogen information

Gene ID:

5153

Uniprot

Q01064

Synonyms:

PDE1B; HEL-S-79p; PDE1B1; PDES1B

Antibody Information

Recommended dilutions:

WB 1:500 - 1:2000 IHC 1:50
- 1:200 IF 1:50 - 1:200

Source:

Rabbit

Isotype:

IgG

Purification:

Affinity purification

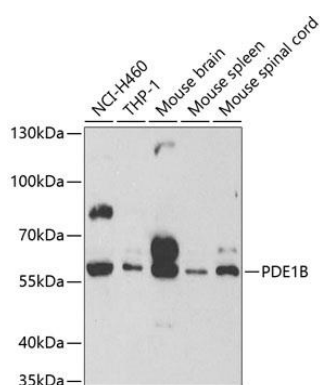
Immunogen:

Recombinant fusion protein containing a sequence corresponding to amino acids 190-536 of human PDE1B (NP_000915.1).

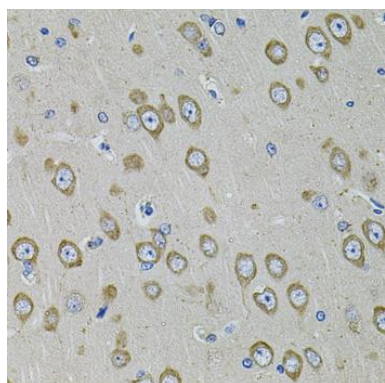
Storage:

Store at -20°C. Avoid freeze / thaw cycles. Buffer: PBS with 0.02% sodium azide, 50% glycerol, pH7.3.

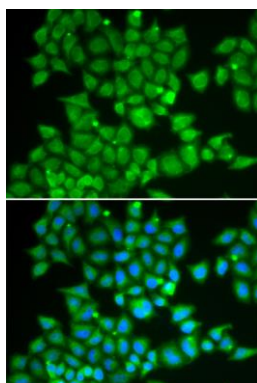
Product Images



Western blot analysis of extracts of various cell lines, using PDE1B antibody (CAB2102) at 1:500 dilution. Secondary antibody: HRP Goat Anti-Rabbit IgG (H+L) (CABS014) at 1:10000 dilution. Lysates/proteins: 25ug per lane. Blocking buffer: 3% nonfat dry milk in TBST.



Immunohistochemistry of paraffin-embedded rat brain using PDE1B antibody (CAB2102) at dilution of 1:100 (40x lens).



Immunofluorescence analysis of U2OS cells using PDE1B antibody (CAB2102). Blue: DAPI for nuclear staining.