

# PGR Rabbit Polyclonal Antibody



CAB2105

## Product Information

### Size:

20uL, 50uL, 100uL, 200uL

### Observed MW:

94kDa

### Calculated MW:

36kDa/38kDa/82kDa/87kDa/  
98kDa

### Applications:

WB

### Reactivity:

Human, Mouse, Rat

## Antibody Information

### Recommended dilutions:

WB 1:500 - 1:2000

### Source:

Rabbit

### Isotype:

IgG

### Purification:

Affinity purification

## Protein Background

This gene encodes a member of the steroid receptor superfamily. The encoded protein mediates the physiological effects of progesterone, which plays a central role in reproductive events associated with the establishment and maintenance of pregnancy. This gene uses two distinct promoters and translation start sites in the first exon to produce several transcript variants, both protein coding and non-protein coding. Two of the isoforms (A and B) are identical except for an additional 165 amino acids found in the N-terminus of isoform B and mediate their own response genes and physiologic effects with little overlap.

## Immunogen information

### Gene ID:

5241

### Uniprot

P06401

### Synonyms:

NR3C3; PR; PGR

### Immunogen:

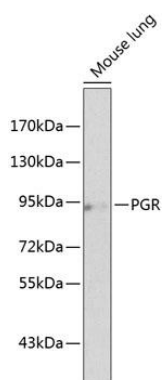
A synthetic peptide corresponding to a sequence within amino acids 830 to the C-terminus of human PGR (NP\_000917.3).

### Storage:

Store at -20°C. Avoid freeze / thaw cycles. Buffer: PBS with 0.02% sodium azide, 50% glycerol, pH7.3.

## Product Images

---



Western blot analysis of extracts of mouse lung, using PGR antibody (CAB2105) at 1:500 dilution. Secondary antibody: HRP Goat Anti-Rabbit IgG (H+L) (CABS014) at 1:10000 dilution. Lysates/proteins: 25ug per lane. Blocking buffer: 3% nonfat dry milk in TBST.