

PPA1 Rabbit Polyclonal Antibody



CAB2108

Product Information

Size:

20uL, 50uL, 100uL, 200uL

Observed MW:

35kDa

Calculated MW:

32kDa

Applications:

WB IHC

Reactivity:

Human, Mouse, Rat

Protein Background

The protein encoded by this gene is a member of the inorganic pyrophosphatase (PPase) family. PPases catalyze the hydrolysis of pyrophosphate to inorganic phosphate, which is important for the phosphate metabolism of cells. Studies of a similar protein in bovine suggested a cytoplasmic localization of this enzyme.

Immunogen information

Gene ID:

5464

Uniprot

Q15181

Synonyms:

PPA1; HEL-S-66p; IOPPP; PP; PP1; SID6-8061

Antibody Information

Recommended dilutions:

WB 1:500 - 1:2000 IHC 1:50
- 1:200

Source:

Rabbit

Isotype:

IgG

Purification:

Affinity purification

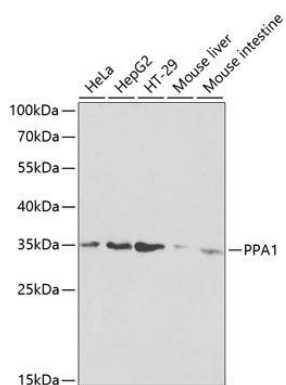
Immunogen:

Recombinant fusion protein containing a sequence corresponding to amino acids 1-289 of human PPA1 (NP_066952.1).

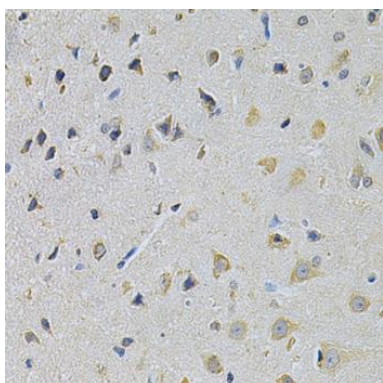
Storage:

Store at -20°C. Avoid freeze / thaw cycles. Buffer: PBS with 0.02% sodium azide, 50% glycerol, pH7.3.

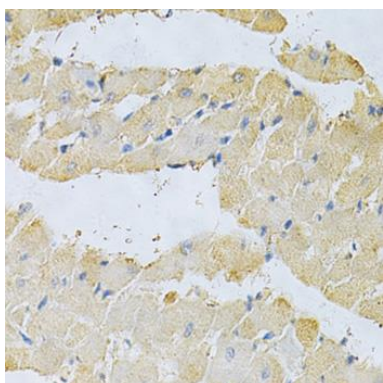
Product Images



Western blot analysis of extracts of various cell lines, using PPA1 antibody (CAB2108) at 1:1000 dilution. Secondary antibody: HRP Goat Anti-Rabbit IgG (H+L) (CABS014) at 1:10000 dilution. Lysates/proteins: 25ug per lane. Blocking buffer: 3% nonfat dry milk in TBST.



Immunohistochemistry of paraffin-embedded rat brain using PPA1 Antibody (CAB2108) at dilution of 1:200 (40x lens).



Immunohistochemistry of paraffin-embedded rat heart using PPA1 Antibody (CAB2108) at dilution of 1:200 (40x lens).