

PPP4C Rabbit Polyclonal Antibody



CAB2109

Product Information

Size:

20uL, 50uL, 100uL, 200uL

Observed MW:

36kDa

Calculated MW:

35kDa

Applications:

WB IHC IF IP

Reactivity:

Human, Mouse, Rat

Antibody Information

Recommended dilutions:

WB 1:500 - 1:2000 IHC 1:50
- 1:200 IF 1:50 - 1:100 IP
1:50 - 1:200

Source:

Rabbit

Isotype:

IgG

Purification:

Affinity purification

Protein Background

Immunogen information

Gene ID:

5531

Uniprot

P60510

Synonyms:

PPP4C; PP-X; PP4; PP4C; PPH3; PPP4; PPX

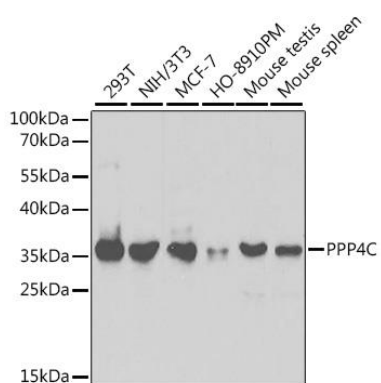
Immunogen:

Recombinant fusion protein containing a sequence corresponding to amino acids 1-307 of human PPP4C (NP_002711.1).

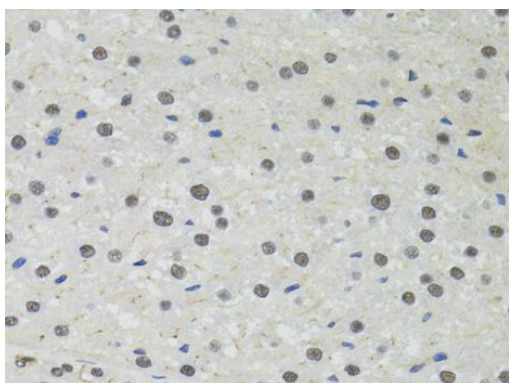
Storage:

Store at -20°C. Avoid freeze / thaw cycles. Buffer: PBS with 0.02% sodium azide, 50% glycerol, pH7.3.

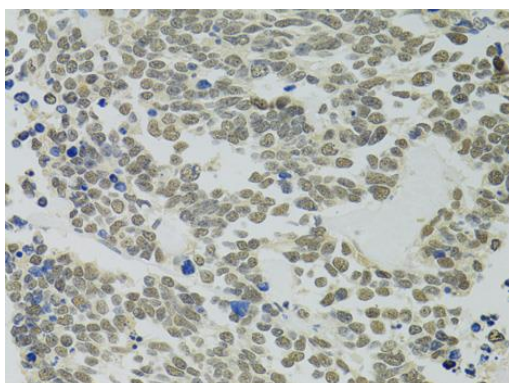
Product Images



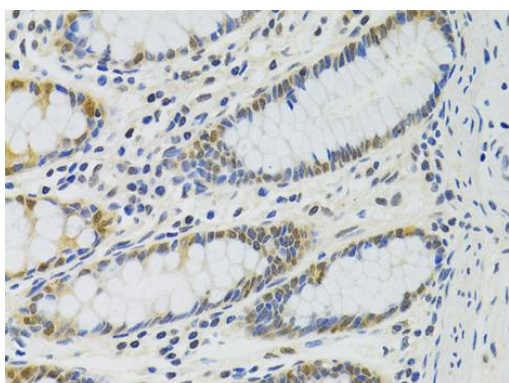
Western blot analysis of extracts of various cell lines, using PPP4C antibody (CAB2109) at 1:1000 dilution. Secondary antibody: HRP Goat Anti-Rabbit IgG (H+L) (CABS014) at 1:10000 dilution. Lysates/proteins: 25ug per lane. Blocking buffer: 3% nonfat dry milk in TBST.



Immunohistochemistry of paraffin-embedded rat liver using PPP4C antibody (CAB2109) at dilution of 1:100 (40x lens).



Immunohistochemistry of paraffin-embedded human lung cancer using PPP4C antibody (CAB2109) at dilution of 1:100 (40x lens).



Immunohistochemistry of paraffin-embedded human colon using PPP4C antibody (CAB2109) at dilution of 1:100 (40x lens).