

# PRKCE Rabbit Polyclonal Antibody



CAB2110

## Product Information

### Size:

20uL, 50uL, 100uL, 200uL

### Observed MW:

100kDa

### Calculated MW:

83kDa

### Applications:

WB IHC

### Reactivity:

Human, Mouse, Rat

## Antibody Information

### Recommended dilutions:

WB 1:500 - 1:2000 IHC 1:50  
- 1:200

### Source:

Rabbit

### Isotype:

IgG

### Purification:

Affinity purification

## Protein Background

Protein kinase C (PKC) is a family of serine- and threonine-specific protein kinases that can be activated by calcium and the second messenger diacylglycerol. PKC family members phosphorylate a wide variety of protein targets and are known to be involved in diverse cellular signaling pathways. PKC family members also serve as major receptors for phorbol esters, a class of tumor promoters. Each member of the PKC family has a specific expression profile and is believed to play a distinct role in cells. The protein encoded by this gene is one of the PKC family members. This kinase has been shown to be involved in many different cellular functions, such as neuron channel activation, apoptosis, cardioprotection from ischemia, heat shock response, as well as insulin exocytosis. Knockout studies in mice suggest that this kinase is important for lipopolysaccharide (LPS)-mediated signaling in activated macrophages and may also play a role in controlling anxiety-like behavior.

## Immunogen information

### Gene ID:

5581

### Uniprot

Q02156

### Synonyms:

PRKCE; PKCE; nPKC-epsilon

### Immunogen:

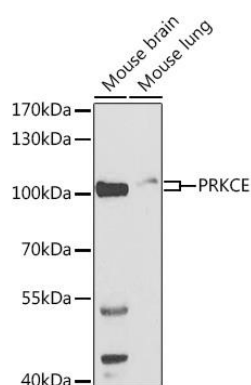
Recombinant fusion protein containing a sequence corresponding to amino acids 488-737 of human PRKCE (NP\_005391.1).

### Storage:

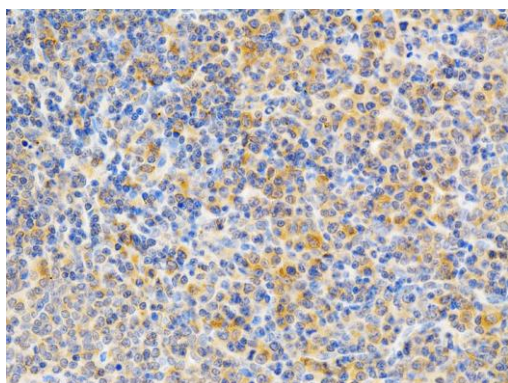
Store at -20°C. Avoid freeze / thaw cycles. Buffer: PBS with 0.02% sodium azide, 50% glycerol, pH7.3.

## Product Images

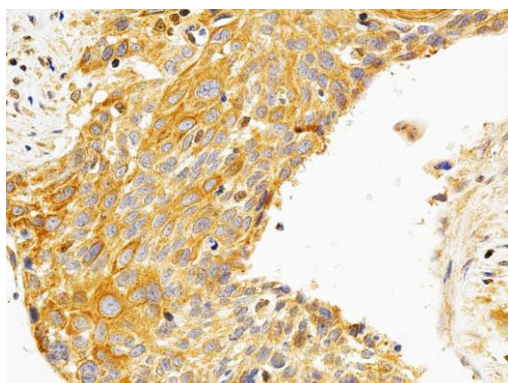
---



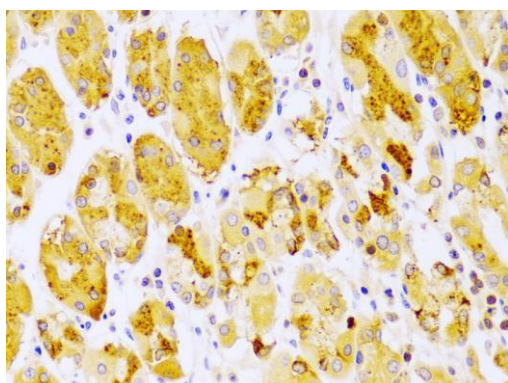
Western blot analysis of extracts of various cell lines, using PRKCE antibody (CAB2110) at 1:500 dilution. Secondary antibody: HRP Goat Anti-Rabbit IgG (H+L) (CABS014) at 1:10000 dilution. Lysates/proteins: 25ug per lane. Blocking buffer: 3% nonfat dry milk in TBST.



Immunohistochemistry of paraffin-embedded rat spleen using PRKCE antibody (CAB2110) at dilution of 1:200 (40x lens).



Immunohistochemistry of paraffin-embedded human esophageal cancer using PRKCE antibody (CAB2110) at dilution of 1:200 (40x lens).



Immunohistochemistry of paraffin-embedded human stomach using PRKCE antibody (CAB2110) at dilution of 1:100 (40x lens).