

# MAPK7 Rabbit Polyclonal Antibody



CAB2111

## Product Information

### Size:

20uL, 50uL, 100uL, 200uL

### Observed MW:

115kDa

### Calculated MW:

50kDa/59kDa/73kDa/88kDa

### Applications:

WB IHC IF

### Reactivity:

Human, Mouse, Rat

## Antibody Information

### Recommended dilutions:

WB 1:500 - 1:2000 IHC 1:50  
- 1:200 IF 1:50 - 1:200

### Source:

Rabbit

### Isotype:

IgG

### Purification:

Affinity purification

## Protein Background

The protein encoded by this gene is a member of the MAP kinase family. MAP kinases act as an integration point for multiple biochemical signals, and are involved in a wide variety of cellular processes such as proliferation, differentiation, transcription regulation and development. This kinase is specifically activated by mitogen-activated protein kinase kinase 5 (MAP2K5/MEK5). It is involved in the downstream signaling processes of various receptor molecules including receptor type kinases, and G protein-coupled receptors. In response to extracellular signals, this kinase translocates to cell nucleus, where it regulates gene expression by phosphorylating, and activating different transcription factors. Four alternatively spliced transcript variants of this gene encoding two distinct isoforms have been reported.

## Immunogen information

### Gene ID:

5598

### Uniprot

Q13164

### Synonyms:

MAPK7; BMK1; ERK4; ERK5; PRKM7

### Immunogen:

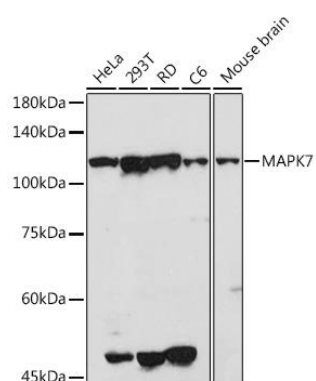
Recombinant fusion protein containing a sequence corresponding to amino acids 1-310 of human MAPK7 (NP\_002740.2).

### Storage:

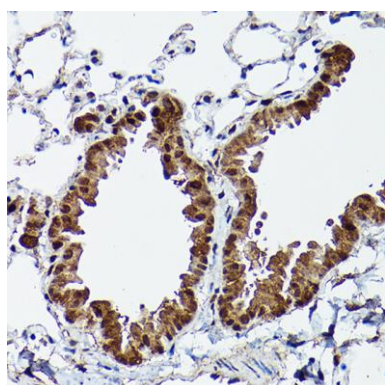
Store at -20°C. Avoid freeze / thaw cycles. Buffer: PBS with 0.02% sodium azide, 50% glycerol, pH7.3.

## Product Images

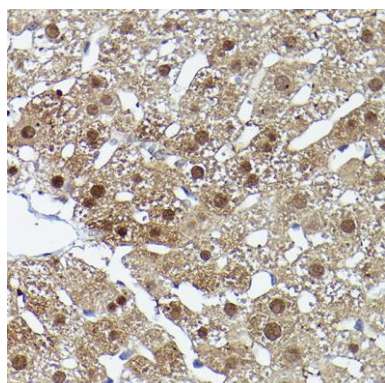
---



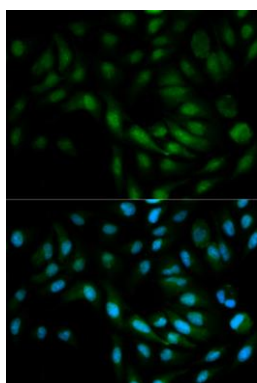
Western blot analysis of extracts of various cell lines, using MAPK7 antibody (CAB2111) at 1:500 dilution. Secondary antibody: HRP Goat Anti-Rabbit IgG (H+L) (CABS014) at 1:10000 dilution. Lysates/proteins: 25ug per lane. Blocking buffer: 3% nonfat dry milk in TBST. Detection: ECL Basic Kit (CABM00020). Exposure time: 90s.



Immunohistochemistry of paraffin-embedded mouse lung using MAPK7 Rabbit pAb (CAB2111) at dilution of 1:50 (40x lens).



Immunohistochemistry of paraffin-embedded rat liver using MAPK7 Rabbit pAb (CAB2111) at dilution of 1:50 (40x lens).



Immunofluorescence analysis of MCF-7 cells using MAPK7 antibody (CAB2111). Blue: DAPI for nuclear staining.