

THY1 Rabbit Polyclonal Antibody



CAB2126

Product Information

Size:

20uL, 50uL, 100uL, 200uL

Observed MW:

25kDa

Calculated MW:

17kDa

Applications:

WB IF

Reactivity:

Mouse, Rat

Protein Background

This gene encodes a cell surface glycoprotein and member of the immunoglobulin superfamily of proteins. The encoded protein is involved in cell adhesion and cell communication in numerous cell types, but particularly in cells of the immune and nervous systems. The encoded protein is widely used as a marker for hematopoietic stem cells. This gene may function as a tumor suppressor in nasopharyngeal carcinoma. Alternative splicing results in multiple transcript variants.

Immunogen information

Gene ID:

7070

Uniprot

P04216

Synonyms:

THY1; CD90; CDw90

Antibody Information

Recommended dilutions:

WB 1:1000 - 1:2000 IF 1:50 - 1:200

Source:

Rabbit

Isotype:

IgG

Purification:

Affinity purification

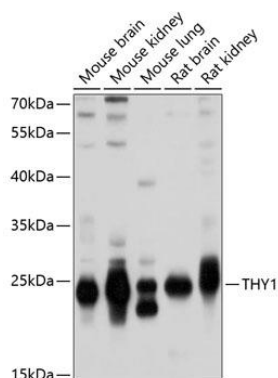
Immunogen:

Recombinant fusion protein containing a sequence corresponding to amino acids 20-130 of human THY1 (NP_006279.2).

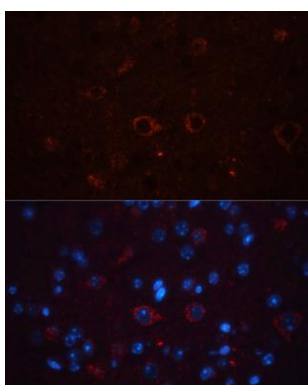
Storage:

Store at -20°C. Avoid freeze / thaw cycles. Buffer: PBS with 0.02% sodium azide, 50% glycerol, pH7.3.

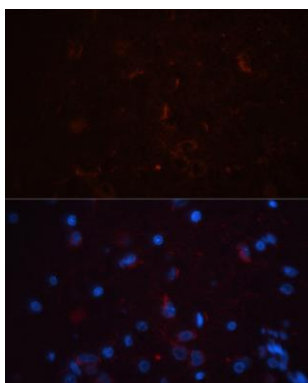
Product Images



Western blot analysis of extracts of various cell lines, using THY1 antibody (CAB2126) at 1:1000 dilution. Secondary antibody: HRP Goat Anti-Rabbit IgG (H+L) (CABS014) at 1:10000 dilution. Lysates/proteins: 25ug per lane. Blocking buffer: 3% nonfat dry milk in TBST. Detection: ECL Basic Kit (CABM00020). Exposure time: 5s.



Immunofluorescence analysis of Mouse brain cells using THY1 antibody (CAB2126) at dilution of 1:100. Blue: DAPI for nuclear staining.



Immunofluorescence analysis of Rat brain cells using THY1 antibody (CAB2126) at dilution of 1:100. Blue: DAPI for nuclear staining.