

VEGFB Rabbit Polyclonal Antibody



CAB2132

Product Information

Size:

20uL, 50uL, 100uL, 200uL

Observed MW:

32KDa

Calculated MW:

21kDa

Applications:

WB IF

Reactivity:

Human, Mouse, Rat

Antibody Information

Recommended dilutions:

WB 1:500 - 1:2000 IF 1:50 - 1:200

Source:

Rabbit

Isotype:

IgG

Purification:

Affinity purification

Protein Background

This gene encodes a member of the PDGF (platelet-derived growth factor)/VEGF (vascular endothelial growth factor) family. The VEGF family members regulate the formation of blood vessels and are involved in endothelial cell physiology. This member is a ligand for VEGFR-1 (vascular endothelial growth factor receptor 1) and NRP-1 (neuropilin-1). Studies in mice showed that this gene was co-expressed with nuclear-encoded mitochondrial genes and the encoded protein specifically controlled endothelial uptake of fatty acids. Alternatively spliced transcript variants encoding distinct isoforms have been identified.

Immunogen information

Gene ID:

7423

Uniprot

P49765

Synonyms:

VEGFB; VEGFL; VRF; VEGF-B

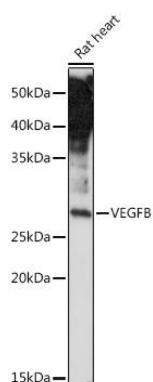
Immunogen:

A synthetic peptide corresponding to a sequence within amino acids 100-200 of human VEGFB (NP_003368.1).

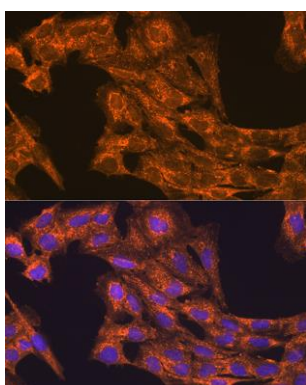
Storage:

Store at -20°C. Avoid freeze / thaw cycles. Buffer: PBS with 0.02% sodium azide, 50% glycerol, pH7.3.

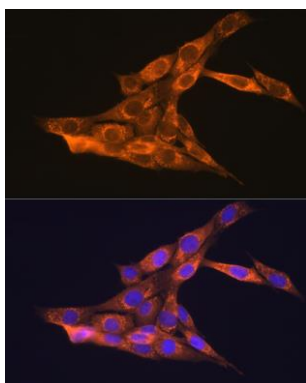
Product Images



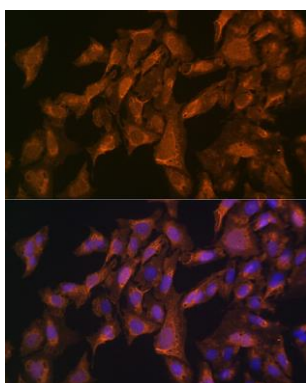
Western blot analysis of extracts of Rat heart, using VEGFB Rabbit pAb (CAB2132) at 1:500 dilution. Secondary antibody: HRP Goat Anti-Rabbit IgG (H+L) (CABS014) at 1:10000 dilution. Lysates/proteins: 25ug per lane. Blocking buffer: 3% nonfat dry milk in TBST. Detection: ECL Enhanced Kit (CABM00021). Exposure time: 180s.



Immunofluorescence analysis of C6 cells using VEGFB Rabbit pAb (CAB2132) at dilution of 1:100 (40x lens). Blue: DAPI for nuclear staining.



Immunofluorescence analysis of NIH-3T3 cells using VEGFB Rabbit pAb (CAB2132) at dilution of 1:100 (40x lens). Blue: DAPI for nuclear staining.



Immunofluorescence analysis of U-2 OS cells using VEGFB Rabbit pAb (CAB2132) at dilution of 1:100 (40x lens). Blue: DAPI for nuclear staining.