

XRCC3 Rabbit Polyclonal Antibody



CAB2134

Product Information

Size:

20uL, 50uL, 100uL, 200uL

Observed MW:

37kDa

Calculated MW:

37kDa

Applications:

WB IHC IF

Reactivity:

Human, Mouse, Rat

Antibody Information

Recommended dilutions:

WB 1:500 - 1:2000 IHC 1:50
- 1:200 IF 1:50 - 1:200

Source:

Rabbit

Isotype:

IgG

Purification:

Affinity purification

Protein Background

This gene encodes a member of the RecA/Rad51-related protein family that participates in homologous recombination to maintain chromosome stability and repair DNA damage. This gene functionally complements Chinese hamster irs1SF, a repair-deficient mutant that exhibits hypersensitivity to a number of different DNA-damaging agents and is chromosomally unstable. A rare microsatellite polymorphism in this gene is associated with cancer in patients of varying radiosensitivity. Alternatively spliced transcript variants encoding the same protein have been identified.

Immunogen information

Gene ID:

7517

Uniprot

O43542

Synonyms:

XRCC3; CMM6

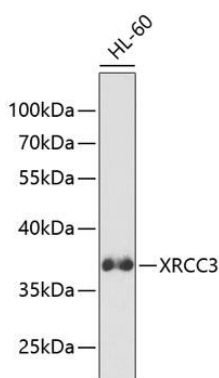
Immunogen:

Recombinant fusion protein containing a sequence corresponding to amino acids 62-346 of human XRCC3 (NP_001093588.1).

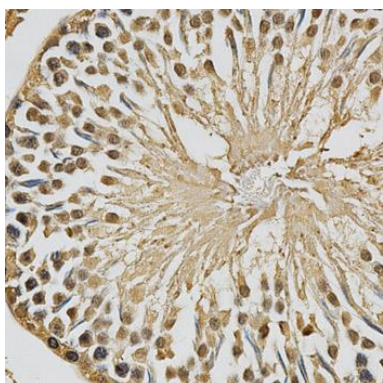
Storage:

Store at -20°C. Avoid freeze / thaw cycles. Buffer: PBS with 0.02% sodium azide, 50% glycerol, pH7.3.

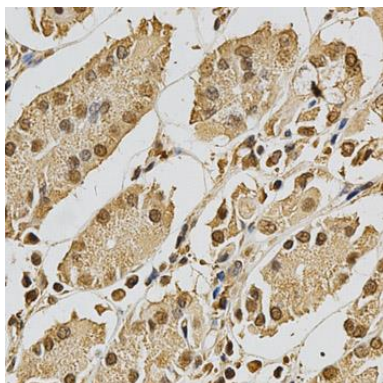
Product Images



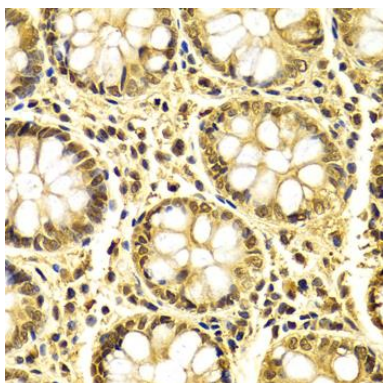
Western blot analysis of extracts of HL-60 cells, using XRCC3 antibody (CAB2134) at 1:1000 dilution. Secondary antibody: HRP Goat Anti-Rabbit IgG (H+L) (CABS014) at 1:10000 dilution. Lysates/proteins: 25ug per lane. Blocking buffer: 3% nonfat dry milk in TBST.



Immunohistochemistry of paraffin-embedded rat testis using XRCC3 antibody (CAB2134) at dilution of 1:200 (40x lens).



Immunohistochemistry of paraffin-embedded human stomach using XRCC3 antibody (CAB2134) at dilution of 1:200 (40x lens).



Immunohistochemistry of paraffin-embedded human colon using XRCC3 antibody (CAB2134) at dilution of 1:100 (40x lens).