

ZYX Rabbit Polyclonal Antibody



CAB2135

Product Information

Size:

20uL, 50uL, 100uL, 200uL

Observed MW:

78kDa

Calculated MW:

45kDa/61kDa

Applications:

WB IHC IF

Reactivity:

Human, Mouse, Rat

Antibody Information

Recommended dilutions:

WB 1:500 - 1:2000 IHC 1:50
- 1:200 IF 1:50 - 1:200

Source:

Rabbit

Isotype:

IgG

Purification:

Affinity purification

Protein Background

Focal adhesions are actin-rich structures that enable cells to adhere to the extracellular matrix and at which protein complexes involved in signal transduction assemble. Zyxin is a zinc-binding phosphoprotein that concentrates at focal adhesions and along the actin cytoskeleton. Zyxin has an N-terminal proline-rich domain and three LIM domains in its C-terminal half. The proline-rich domain may interact with SH3 domains of proteins involved in signal transduction pathways while the LIM domains are likely involved in protein-protein binding. Zyxin may function as a messenger in the signal transduction pathway that mediates adhesion-stimulated changes in gene expression and may modulate the cytoskeletal organization of actin bundles. Alternative splicing results in multiple transcript variants that encode the same isoform.

Immunogen information

Gene ID:

7791

Uniprot

Q15942

Synonyms:

ZYX; ESP-2; HED-2; zyxin

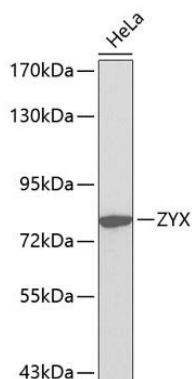
Immunogen:

Recombinant fusion protein containing a sequence corresponding to amino acids 1-300 of human ZYX (NP_001010972.1).

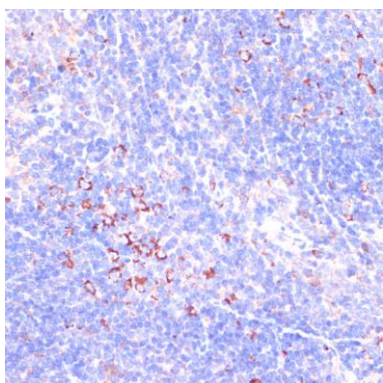
Storage:

Store at -20°C. Avoid freeze / thaw cycles. Buffer: PBS with 0.02% sodium azide, 50% glycerol, pH7.3.

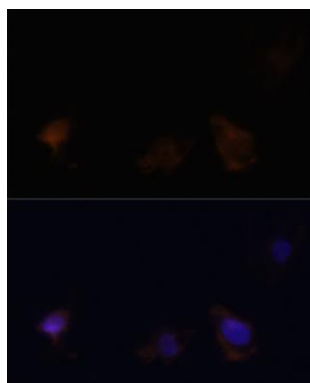
Product Images



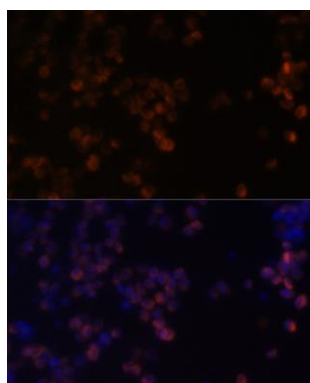
Western blot analysis of extracts of HeLa cells, using ZYX antibody (CAB2135). Secondary antibody: HRP Goat Anti-Rabbit IgG (H+L) (CABS014) at 1:10000 dilution. Lysates/proteins: 25ug per lane. Blocking buffer: 3% nonfat dry milk in TBST.



Immunohistochemistry of paraffin-embedded mouse spleen using ZYX antibody (CAB2135) at dilution of 1:100 (40x lens).



Immunofluorescence analysis of C6 cells using ZYX antibody (CAB2135) at dilution of 1:100. Blue: DAPI for nuclear staining.



Immunofluorescence analysis of Raw264.7 cells using ZYX antibody (CAB2135) at dilution of 1:100. Blue: DAPI for nuclear staining.