

CUL1 Rabbit Polyclonal Antibody



CAB2136

Product Information

Size:

20uL, 50uL, 100uL, 200uL

Observed MW:

100kDa

Calculated MW:

89kDa

Applications:

WB IF

Reactivity:

Human, Mouse, Rat

Antibody Information

Recommended dilutions:

WB 1:500 - 1:2000 IF 1:10 - 1:100

Source:

Rabbit

Isotype:

IgG

Purification:

Affinity purification

Protein Background

Immunogen information

Gene ID:

8454

Uniprot

Q13616

Synonyms:

Cullin 1; CUL1; cullin-1; MGC149834; MGC149835

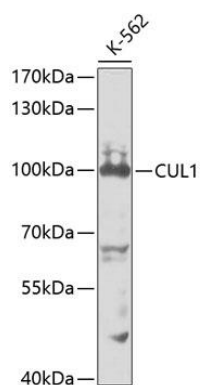
Immunogen:

Recombinant fusion protein containing a sequence corresponding to amino acids 500-776 of human CUL1 (NP_003583.2).

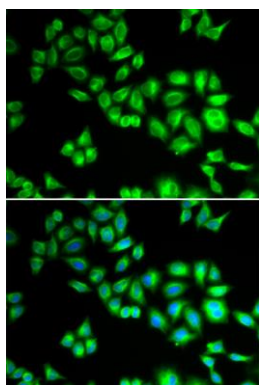
Storage:

Store at -20°C. Avoid freeze / thaw cycles. Buffer: PBS with 0.02% sodium azide, 50% glycerol, pH7.3.

Product Images



Western blot analysis of extracts of K-562 cells, using CUL1 antibody (CAB2136) at 1:1000 dilution. Secondary antibody: HRP Goat Anti-Rabbit IgG (H+L) (CABS014) at 1:10000 dilution. Lysates/proteins: 25ug per lane. Blocking buffer: 3% nonfat dry milk in TBST.



Immunofluorescence analysis of HeLa cells using CUL1 antibody (CAB2136). Blue: DAPI for nuclear staining.