

GAS2L1 Rabbit Polyclonal Antibody



CAB2143

Product Information

Size:

20uL, 50uL, 100uL, 200uL

Observed MW:

58kDa

Calculated MW:

34kDa/36kDa/48kDa/72kDa

Applications:

WB

Reactivity:

Human

Protein Background

This gene encodes a member of the growth arrest-specific 2 protein family. This protein binds components of the cytoskeleton and may be involved in mediating interactions between microtubules and microfilaments. Alternate splicing results in multiple transcript variants. A pseudogene of this gene is found on chromosome 9.

Immunogen information

Gene ID:

10634

Uniprot

Q99501

Synonyms:

GAS2L1; GAR22

Antibody Information

Recommended dilutions:

WB 1:500 - 1:2000

Source:

Rabbit

Isotype:

IgG

Purification:

Affinity purification

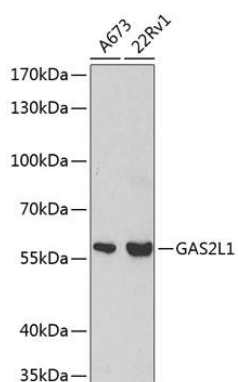
Immunogen:

Recombinant fusion protein containing a sequence corresponding to amino acids 130-400 of human GAS2L1 (NP_006469.2).

Storage:

Store at -20°C. Avoid freeze / thaw cycles. Buffer: PBS with 0.02% sodium azide, 50% glycerol, pH7.3.

Product Images



Western blot analysis of extracts of various cell lines, using GAS2L1 antibody (CAB2143) at 1:500 dilution. Secondary antibody: HRP Goat Anti-Rabbit IgG (H+L) (CABS014) at 1:10000 dilution. Lysates/proteins: 25ug per lane. Blocking buffer: 3% nonfat dry milk in TBST.