

MALT1 Rabbit Polyclonal Antibody



CAB2144

Product Information

Size:

20uL, 50uL, 100uL, 200uL

Observed MW:

102kDa

Calculated MW:

91kDa/92kDa

Applications:

WB IF

Reactivity:

Human, Mouse, Rat

Protein Background

This gene has been found to be recurrently rearranged in chromosomal translocation with two other genes - baculoviral IAP repeat-containing protein 3 (also known as apoptosis inhibitor 2) and immunoglobulin heavy chain locus - in mucosa-associated lymphoid tissue lymphomas. The protein encoded by this gene may play a role in NF-kappaB activation. Two alternatively spliced transcript variants encoding different isoforms have been described for this gene.

Immunogen information

Gene ID:

10892

Uniprot

Q9UDY8

Synonyms:

MALT1; IMD12; MLT; MLT1; PCASP1

Antibody Information

Recommended dilutions:

WB 1:500 - 1:2000 IF 1:50 - 1:200

Source:

Rabbit

Isotype:

IgG

Purification:

Affinity purification

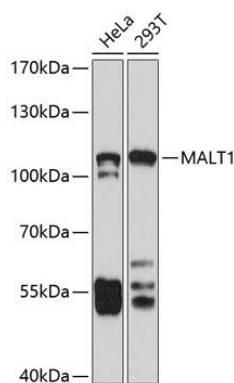
Immunogen:

Recombinant fusion protein containing a sequence corresponding to amino acids 125-450 of human MALT1 (NP_776216.1).

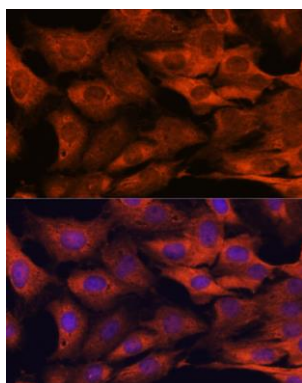
Storage:

Store at -20°C. Avoid freeze / thaw cycles. Buffer: PBS with 0.02% sodium azide, 50% glycerol, pH7.3.

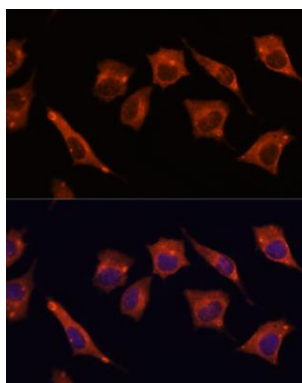
Product Images



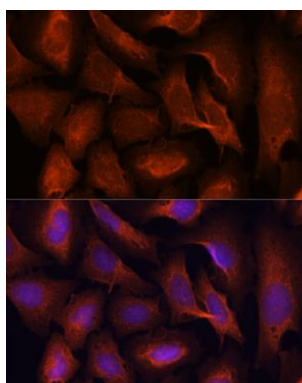
Western blot analysis of extracts of various cell lines, using MALT1 antibody (CAB2144) at 1:1000 dilution. Secondary antibody: HRP Goat Anti-Rabbit IgG (H+L) (CABS014) at 1:10000 dilution. Lysates/proteins: 25ug per lane. Blocking buffer: 3% nonfat dry milk in TBST. Detection: ECL Basic Kit (CABM00020). Exposure time: 90s.



Immunofluorescence analysis of C6 cells using MALT1 antibody (CAB2144) at dilution of 1:100. Blue: DAPI for nuclear staining.



Immunofluorescence analysis of L929 cells using MALT1 antibody (CAB2144) at dilution of 1:100. Blue: DAPI for nuclear staining.



Immunofluorescence analysis of U-2 OS cells using MALT1 antibody (CAB2144) at dilution of 1:100. Blue: DAPI for nuclear staining.