

LETMD1 Rabbit Polyclonal Antibody



CAB2147

Product Information

Size:

20uL, 50uL, 100uL, 200uL

Observed MW:

41kDa

Calculated MW:

11kDa/17kDa/23kDa/35kDa/
41kDa/43kDa

Applications:

WB IHC IF

Reactivity:

Human, Mouse, Rat

Antibody Information

Recommended dilutions:

WB 1:500 - 1:2000 IHC 1:50
- 1:200 IF 1:50 - 1:200

Source:

Rabbit

Isotype:

IgG

Purification:

Affinity purification

Protein Background

This gene encodes a mitochondrial outer membrane protein. It has a potential role in tumorigenesis, which may result from negative regulation of the p53 tumor suppressor gene. Alternatively spliced transcript variants have been noted for this gene.

Immunogen information

Gene ID:

25875

Uniprot

Q6P1Q0

Synonyms:

LETMD1; 1110019O13Rik; HCCR; HCCR-1; HCCR-2; HCCR1; HCCR2;
HCRR-2

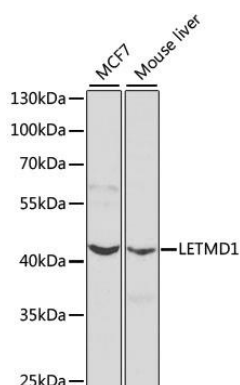
Immunogen:

Recombinant fusion protein containing a sequence corresponding to amino acids 161-360 of human LETMD1 (NP_056231.3).

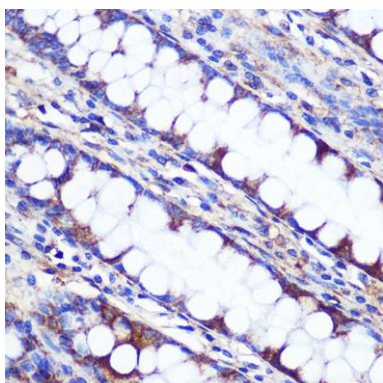
Storage:

Store at -20°C. Avoid freeze / thaw cycles. Buffer: PBS with 0.02% sodium azide, 50% glycerol, pH7.3.

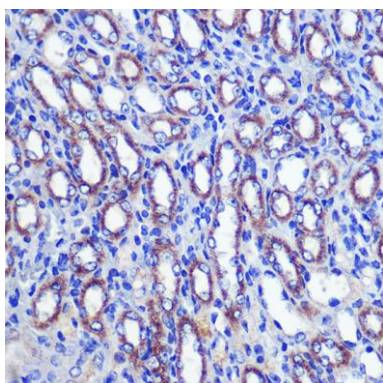
Product Images



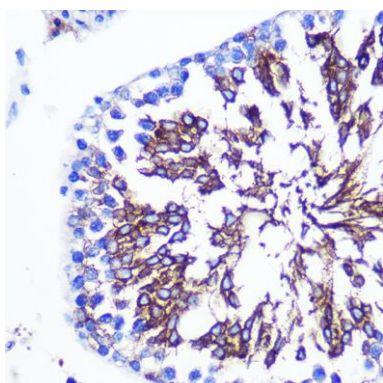
Western blot analysis of extracts of various cell lines, using LETMD1 antibody (CAB2147) at 1:1000 dilution. Secondary antibody: HRP Goat Anti-Rabbit IgG (H+L) (CABS014) at 1:10000 dilution. Lysates/proteins: 25ug per lane. Blocking buffer: 3% nonfat dry milk in TBST. Detection: ECL Basic Kit (CABM00020). Exposure time: 90s.



Immunohistochemistry of paraffin-embedded Human colon using LETMD1 Rabbit pAb (CAB2147) at dilution of 1:100 (40x lens).



Immunohistochemistry of paraffin-embedded Mouse kidney using LETMD1 Rabbit pAb (CAB2147) at dilution of 1:100 (40x lens).



Immunohistochemistry of paraffin-embedded Rat testis using LETMD1 Rabbit pAb (CAB2147) at dilution of 1:100 (40x lens).