

# PIWIL1 Rabbit Polyclonal Antibody



CAB2150

## Product Information

### Size:

20uL, 50uL, 100uL, 200uL

### Observed MW:

102kDa/110kDa

### Calculated MW:

95kDa/98kDa

### Applications:

WB IHC

### Reactivity:

Human, Mouse, Rat

## Protein Background

This gene encodes a member of the PIWI subfamily of Argonaute proteins, evolutionarily conserved proteins containing both PAZ and Piwi motifs that play important roles in stem cell self-renewal, RNA silencing, and translational regulation in diverse organisms. The encoded protein may play a role as an intrinsic regulator of the self-renewal capacity of germline and hematopoietic stem cells. Alternatively spliced transcript variants encoding different isoforms have been found for this gene.

## Immunogen information

### Gene ID:

57749

### Uniprot

Q9JMB7

### Synonyms:

PIWIL1; CT80.1; HIWI; MIWI; PIWI

## Antibody Information

### Recommended dilutions:

WB 1:500 - 1:2000 IHC 1:50  
- 1:200

### Source:

Rabbit

### Isotype:

IgG

### Purification:

Affinity purification

### Immunogen:

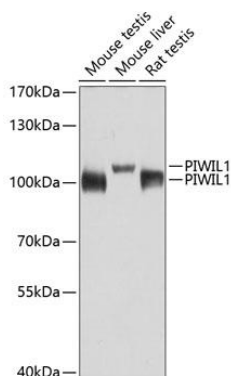
Recombinant protein of mouse PIWIL1

### Storage:

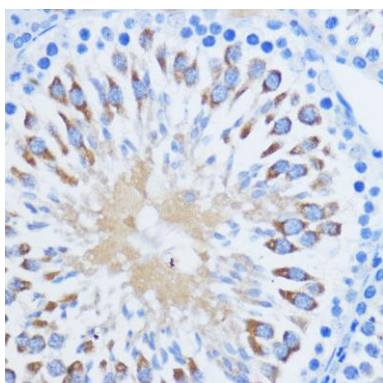
Store at -20°C. Avoid freeze / thaw cycles. Buffer: PBS with 0.02% sodium azide, 50% glycerol, pH7.3.

## Product Images

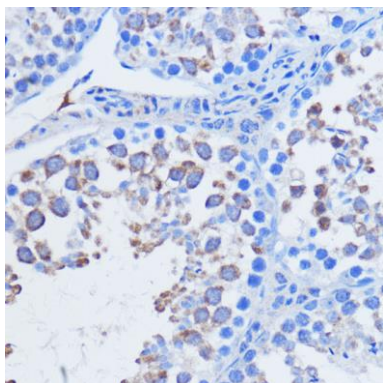
---



Western blot analysis of extracts of various cell lines, using PIWIL1 antibody (CAB2150) at 1:1000 dilution. Secondary antibody: HRP Goat Anti-Rabbit IgG (H+L) (CABS014) at 1:10000 dilution. Lysates/proteins: 25ug per lane. Blocking buffer: 3% nonfat dry milk in TBST. Detection: ECL Basic Kit (CABM00020). Exposure time: 30s.



Immunohistochemistry of paraffin-embedded rat testis using Piwil1 antibody (CAB2150) at dilution of 1:100 (40x lens).



Immunohistochemistry of paraffin-embedded mouse testis using Piwil1 antibody (CAB2150) at dilution of 1:100 (40x lens).