

KBTBD3 Rabbit Polyclonal Antibody



CAB2152

Product Information

Size:

20uL, 50uL, 100uL, 200uL

Observed MW:

69kDa

Calculated MW:

69kDa

Applications:

WB

Reactivity:

Human

Antibody Information

Recommended dilutions:

WB 1:500 - 1:2000

Source:

Rabbit

Isotype:

IgG

Purification:

Affinity purification

Protein Background

Immunogen information

Gene ID:

69149

Uniprot

Synonyms:

KBTBD3; BKLHD3

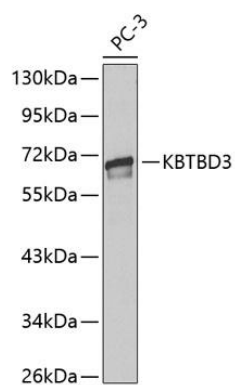
Immunogen:

Recombinant fusion protein containing a sequence corresponding to amino acids 410-607 of mouse KBTBD3 (NP_081238.2).

Storage:

Store at -20°C. Avoid freeze / thaw cycles. Buffer: PBS with 0.02% sodium azide, 50% glycerol, pH7.3.

Product Images



Western blot analysis of extracts of PC-3 cells, using KBTBD3 antibody (CAB2152). Secondary antibody: HRP Goat Anti-Rabbit IgG (H+L) (CABS014) at 1:10000 dilution. Lysates/proteins: 25ug per lane. Blocking buffer: 3% nonfat dry milk in TBST.