

# MAX Rabbit Polyclonal Antibody



CAB2157

---

## Product Information

### Size:

20uL, 50uL, 100uL, 200uL

### Observed MW:

19kDa

### Calculated MW:

9kDa/11kDa/12kDa/15kDa/17kDa/18kDa

### Applications:

WB IHC IF

### Reactivity:

Human, Mouse, Rat

## Antibody Information

### Recommended dilutions:

WB 1:500 - 1:2000 IHC 1:50 - 1:200 IF 1:50 - 1:200

### Source:

Rabbit

### Isotype:

IgG

### Purification:

Affinity purification

## Protein Background

The protein encoded by this gene is a member of the basic helix-loop-helix leucine zipper (bHLHZ) family of transcription factors. It is able to form homodimers and heterodimers with other family members, which include Mad, Mxi1 and Myc. Myc is an oncoprotein implicated in cell proliferation, differentiation and apoptosis. The homodimers and heterodimers compete for a common DNA target site (the E box) and rearrangement among these dimer forms provides a complex system of transcriptional regulation. Mutations of this gene have been reported to be associated with hereditary pheochromocytoma. A pseudogene of this gene is located on the long arm of chromosome 7. Alternative splicing results in multiple transcript variants.

## Immunogen information

### Gene ID:

4149

### Uniprot

P61244

### Synonyms:

MAX; bHLHd4

### Immunogen:

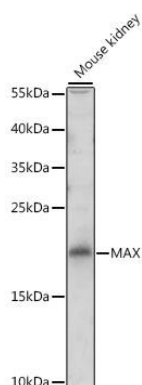
Recombinant fusion protein containing a sequence corresponding to amino acids 1-160 of human MAX (NP\_002373.3).

### Storage:

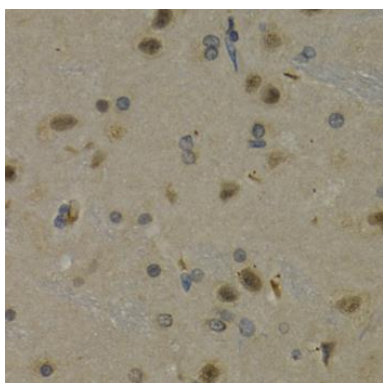
Store at -20°C. Avoid freeze / thaw cycles. Buffer: PBS with 0.02% sodium azide, 50% glycerol, pH7.3.

## Product Images

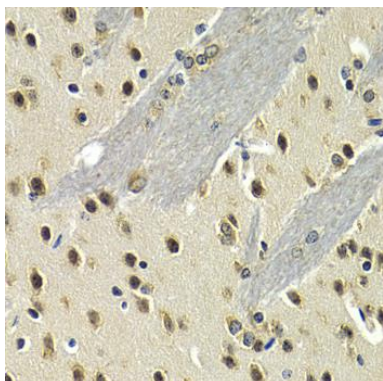
---



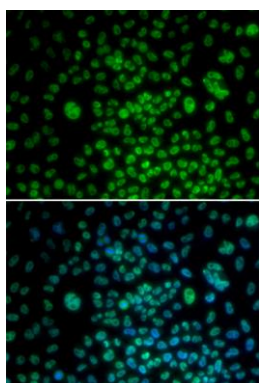
Western blot analysis of extracts of mouse kidney, using MAX antibody (CAB2157) at 1:500 dilution. Secondary antibody: HRP Goat Anti-Rabbit IgG (H+L) (CABS014) at 1:10000 dilution. Lysates/proteins: 25ug per lane. Blocking buffer: 3% nonfat dry milk in TBST. Detection: ECL Basic Kit (CABM00020). Exposure time: 150s.



Immunohistochemistry of paraffin-embedded rat brain using MAX antibody (CAB2157) at dilution of 1:200 (40x lens).



Immunohistochemistry of paraffin-embedded mouse brain using MAX antibody (CAB2157) at dilution of 1:200 (40x lens).



Immunofluorescence analysis of U2OS cells using MAX antibody (CAB2157). Blue: DAPI for nuclear staining.