

ALOX5 Rabbit Polyclonal Antibody



CAB2158

Product Information

Size:

20uL, 50uL, 100uL, 200uL

Observed MW:

68kDa

Calculated MW:

56kDa/61kDa/71kDa/74kDa/
77kDa

Applications:

WB IHC IF

Reactivity:

Human, Mouse, Rat

Protein Background

This gene encodes a member of the lipoxygenase gene family and plays a dual role in the synthesis of leukotrienes from arachidonic acid. The encoded protein, which is expressed specifically in bone marrow-derived cells, catalyzes the conversion of arachidonic acid to 5(S)-hydroperoxy-6-trans-8, 11, 14-cis-eicosatetraenoic acid, and further to the allylic epoxide 5(S)-trans-7, 9-trans-11, 14-cis-eicosatetraenoic acid (leukotriene A4). Leukotrienes are important mediators of a number of inflammatory and allergic conditions. Mutations in the promoter region of this gene lead to a diminished response to antileukotriene drugs used in the treatment of asthma and may also be associated with atherosclerosis and several cancers. Alternatively spliced transcript variants encoding different isoforms have been found for this gene.

Immunogen information

Gene ID:

240

Uniprot

P09917

Antibody Information

Recommended dilutions:

WB 1:500 - 1:2000 IHC 1:50
- 1:200 IF 1:50 - 1:200

Source:

Rabbit

Isotype:

IgG

Purification:

Affinity purification

Synonyms:

ALOX5; 5-LO; 5-LOX; 5LPG; LOG5

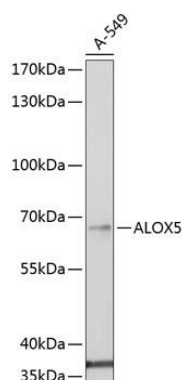
Immunogen:

Recombinant fusion protein containing a sequence corresponding to amino acids 1-300 of human ALOX5 (NP_000689.1).

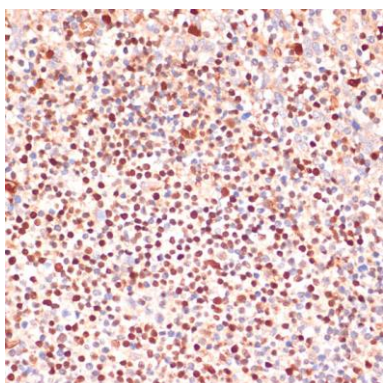
Storage:

Store at -20°C. Avoid freeze / thaw cycles. Buffer: PBS with 0.02% sodium azide, 50% glycerol, pH7.3.

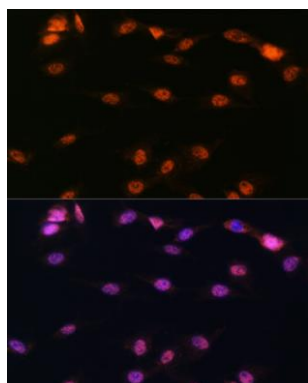
Product Images



Western blot analysis of extracts of A-549 cells, using ALOX5 antibody (CAB2158) at 1:1000 dilution. Secondary antibody: HRP Goat Anti-Rabbit IgG (H+L) (CABS014) at 1:10000 dilution. Lysates/proteins: 25ug per lane. Blocking buffer: 3% nonfat dry milk in TBST. Detection: ECL Basic Kit (CABM00020). Exposure time: 60s.



Immunohistochemistry of paraffin-embedded human tonsil using ALOX5 antibody (CAB2158) at dilution of 1:100 (40x lens).



Immunofluorescence analysis of C6 cells using ALOX5 antibody (CAB2158) at dilution of 1:100. Blue: DAPI for nuclear staining.