

CYP1A1 Rabbit Polyclonal Antibody



CAB2159

Product Information

Size:

20uL, 50uL, 100uL, 200uL

Observed MW:

63kDa

Calculated MW:

18kDa/20kDa/58kDa

Applications:

WB IHC

Reactivity:

Human, Mouse, Rat

Protein Background

This gene, CYP1A1, encodes a member of the cytochrome P450 superfamily of enzymes. The cytochrome P450 proteins are monooxygenases which catalyze many reactions involved in drug metabolism and synthesis of cholesterol, steroids and other lipids. This protein localizes to the endoplasmic reticulum and its expression is induced by some polycyclic aromatic hydrocarbons (PAHs), some of which are found in cigarette smoke. The enzyme's endogenous substrate is unknown; however, it is able to metabolize some PAHs to carcinogenic intermediates. The gene has been associated with lung cancer risk. A related family member, CYP1A2, is located approximately 25 kb away from CYP1A1 on chromosome 15. Alternative splicing results in multiple transcript variants encoding distinct isoforms.

Immunogen information

Gene ID:

1543

Uniprot

P04798

Antibody Information

Recommended dilutions:

WB 1:500 - 1:2000 IHC 1:50
- 1:200

Source:

Rabbit

Isotype:

IgG

Purification:

Affinity purification

Synonyms:

CYP1A1; AHH; AHRR; CP11; CYP1; CYP1A1; P1-450; P450-C; P450DX

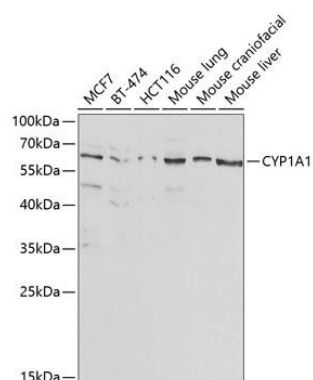
Immunogen:

Recombinant fusion protein containing a sequence corresponding to amino acids 200-460 of human CYP1A1 (NP_000490.1).

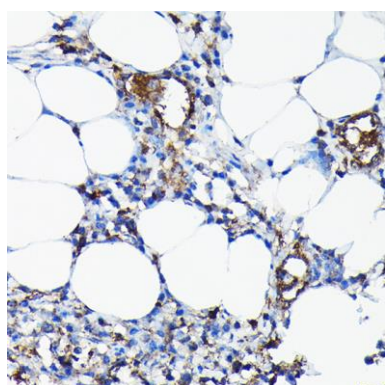
Storage:

Store at -20°C. Avoid freeze / thaw cycles. Buffer: PBS with 0.02% sodium azide, 50% glycerol, pH7.3.

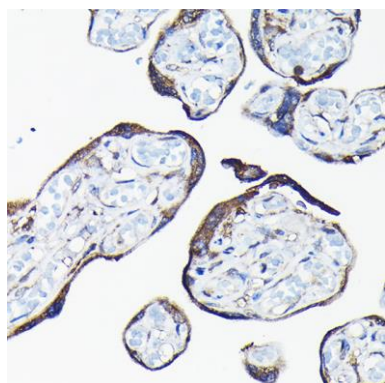
Product Images



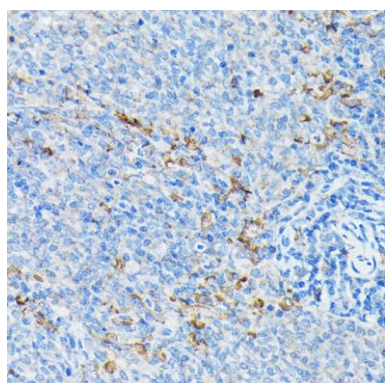
Western blot analysis of extracts of various cell lines, using CYP1A1 antibody (CAB2159) at 1:1000 dilution. Secondary antibody: HRP Goat Anti-Rabbit IgG (H+L) (CABS014) at 1:10000 dilution. Lysates/proteins: 25ug per lane. Blocking buffer: 3% nonfat dry milk in TBST.



Immunohistochemistry of paraffin-embedded rat lung using CYP1A1 Rabbit pAb (CAB2159) at dilution of 1:100 (40x lens).



Immunohistochemistry of paraffin-embedded human placenta using CYP1A1 Rabbit pAb (CAB2159) at dilution of 1:100 (40x lens).



Immunohistochemistry of paraffin-embedded mouse spleen using CYP1A1 Rabbit pAb (CAB2159) at dilution of 1:100 (40x lens).