

CYP2E1 Rabbit Polyclonal Antibody



CAB2160

Product Information

Size:

20uL, 50uL, 100uL, 200uL

Observed MW:

55kDa

Calculated MW:

56kDa

Applications:

WB IHC IF

Reactivity:

Human, Mouse, Rat

Antibody Information

Recommended dilutions:

WB 1:500 - 1:2000 IHC 1:50
- 1:100 IF 1:20 - 1:100

Source:

Rabbit

Isotype:

IgG

Purification:

Affinity purification

Protein Background

This gene encodes a member of the cytochrome P450 superfamily of enzymes. The cytochrome P450 proteins are monooxygenases which catalyze many reactions involved in drug metabolism and synthesis of cholesterol, steroids and other lipids. This protein localizes to the endoplasmic reticulum and is induced by ethanol, the diabetic state, and starvation. The enzyme metabolizes both endogenous substrates, such as ethanol, acetone, and acetal, as well as exogenous substrates including benzene, carbon tetrachloride, ethylene glycol, and nitrosamines which are premutagens found in cigarette smoke. Due to its many substrates, this enzyme may be involved in such varied processes as gluconeogenesis, hepatic cirrhosis, diabetes, and cancer.

Immunogen information

Gene ID:

1571

Uniprot

P05181

Synonyms:

CYP2E1; CPE1; CYP2E; P450-J; P450C2E

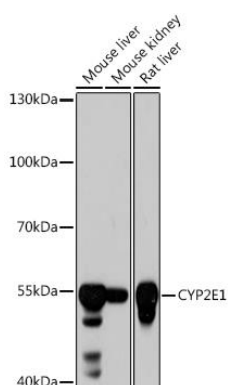
Immunogen:

Recombinant fusion protein containing a sequence corresponding to amino acids 234-493 of human CYP2E1 (NP_000764.1).

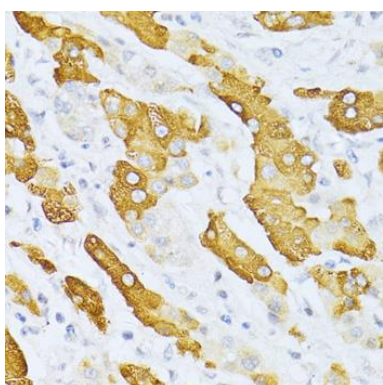
Storage:

Store at -20°C. Avoid freeze / thaw cycles. Buffer: PBS with 0.02% sodium azide, 50% glycerol, pH7.3.

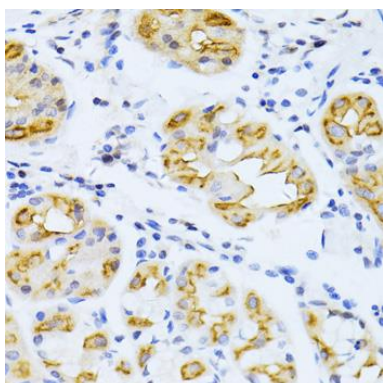
Product Images



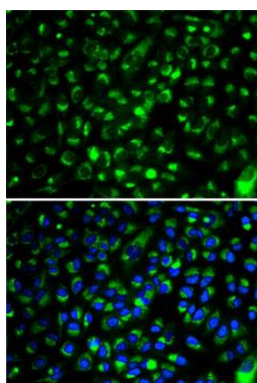
Western blot analysis of extracts of various cell lines, using CYP2E1 antibody (CAB2160) at 1:1000 dilution. Secondary antibody: HRP Goat Anti-Rabbit IgG (H+L) (CABS014) at 1:10000 dilution. Lysates/proteins: 25ug per lane. Blocking buffer: 3% nonfat dry milk in TBST. Detection: ECL Basic Kit (CABM00020). Exposure time: 10s.



Immunohistochemistry of paraffin-embedded human liver cancer using CYP2E1 antibody (CAB2160) at dilution of 1:100 (40x lens).



Immunohistochemistry of paraffin-embedded human stomach using CYP2E1 antibody (CAB2160) at dilution of 1:100 (40x lens).



Immunofluorescence analysis of HeLa cells using CYP2E1 antibody (CAB2160). Blue: DAPI for nuclear staining.