

CFH Rabbit Polyclonal Antibody



CAB2166

Product Information

Size:

20uL, 50uL, 100uL, 200uL

Observed MW:

Calculated MW:

51kDa/139kDa

Applications:

IHC

Reactivity:

Human

Antibody Information

Recommended dilutions:

IHC 1:50 - 1:200

Source:

Rabbit

Isotype:

IgG

Purification:

Affinity purification

Protein Background

This gene is a member of the Regulator of Complement Activation (RCA) gene cluster and encodes a protein with twenty short consensus repeat (SCR) domains. This protein is secreted into the bloodstream and has an essential role in the regulation of complement activation, restricting this innate defense mechanism to microbial infections. Mutations in this gene have been associated with hemolytic-uremic syndrome (HUS) and chronic hypocomplementemic nephropathy. Alternate transcriptional splice variants, encoding different isoforms, have been characterized.

Immunogen information

Gene ID:

3075

Uniprot

P08603

Synonyms:

CFH; AHUS1; AMBP1; ARMD4; ARMS1; CFHL3; FH; FHL1; HF; HF1; HF2; HUS

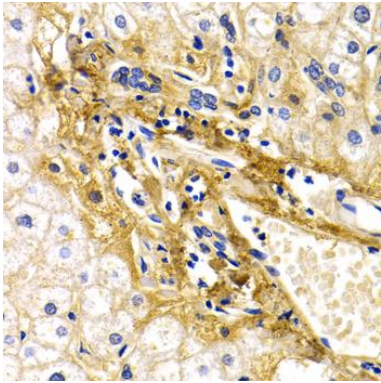
Immunogen:

Recombinant fusion protein containing a sequence corresponding to amino acids 20-270 of human CFH (NP_001014975.1).

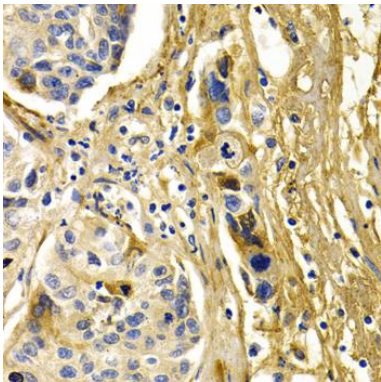
Storage:

Store at -20°C. Avoid freeze / thaw cycles. Buffer: PBS with 0.02% sodium azide, 50% glycerol, pH7.3.

Product Images



Immunohistochemistry of paraffin-embedded human liver damage using CFH antibody (CAB2166) at dilution of 1:200 (40x lens).



Immunohistochemistry of paraffin-embedded human liver cancer using CFH antibody (CAB2166) at dilution of 1:200 (40x lens).