

HLA-DQA1 Rabbit Polyclonal Antibody



CAB2168

Product Information

Size:

20uL, 50uL, 100uL, 200uL

Observed MW:

28kDa-37kDa

Calculated MW:

27kDa

Applications:

WB IHC

Reactivity:

Human, Mouse

Antibody Information

Recommended dilutions:

WB 1:500 - 1:2000 IHC 1:50
- 1:200

Source:

Rabbit

Isotype:

IgG

Purification:

Affinity purification

Protein Background

HLA-DQA1 belongs to the HLA class II alpha chain paralogues. The class II molecule is a heterodimer consisting of an alpha (DQA) and a beta chain (DQB), both anchored in the membrane. It plays a central role in the immune system by presenting peptides derived from extracellular proteins. Class II molecules are expressed in antigen presenting cells (APC: B Lymphocytes, dendritic cells, macrophages). The alpha chain is approximately 33-35 kDa. It is encoded by 5 exons; exon 1 encodes the leader peptide, exons 2 and 3 encode the two extracellular domains, and exon 4 encodes the transmembrane domain and the cytoplasmic tail. Within the DQ molecule both the alpha chain and the beta chain contain the polymorphisms specifying the peptide binding specificities, resulting in up to four different molecules. Typing for these polymorphisms is routinely done for bone marrow transplantation.

Immunogen information

Gene ID:

3117

Uniprot

P01909

Synonyms:

HLA-DQA1; CELIAC1; DQ-A1; HLA-DQA; CD; GSE; class II

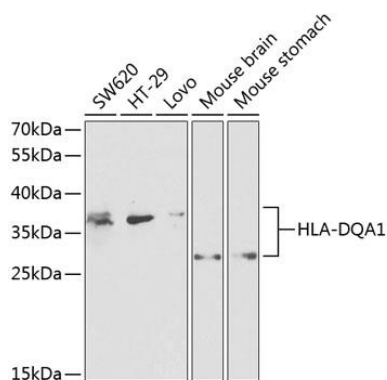
Immunogen:

Recombinant fusion protein containing a sequence corresponding to amino acids 24-216 of human HLA-DQA1 (NP_002113.2).

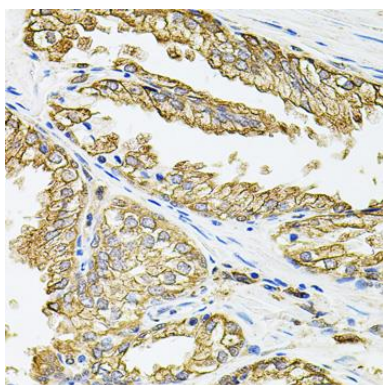
Storage:

Store at -20°C. Avoid freeze / thaw cycles. Buffer: PBS with 0.02% sodium azide, 50% glycerol, pH7.3.

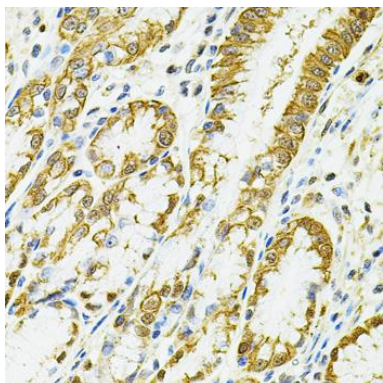
Product Images



Western blot analysis of extracts of various cell lines, using HLA-DQA1 antibody (CAB2168) at 1:1000 dilution. Secondary antibody: HRP Goat Anti-Rabbit IgG (H+L) (CABS014) at 1:10000 dilution. Lysates/proteins: 25ug per lane. Blocking buffer: 3% nonfat dry milk in TBST.



Immunohistochemistry of paraffin-embedded human prostate using HLA-DQA1 antibody (CAB2168) at dilution of 1:100 (40x lens).



Immunohistochemistry of paraffin-embedded human esophagus using HLA-DQA1 antibody (CAB2168) at dilution of 1:100 (40x lens).