

PLCG2 Rabbit Polyclonal Antibody



CAB2182

Product Information

Size:

20uL, 50uL, 100uL, 200uL

Observed MW:

175kDa

Calculated MW:

147kDa

Applications:

WB IHC IF

Reactivity:

Human, Mouse

Protein Background

The protein encoded by this gene is a transmembrane signaling enzyme that catalyzes the conversion of 1-phosphatidyl-1D-myo-inositol 4, 5-bisphosphate to 1D-myo-inositol 1, 4, 5-trisphosphate (IP3) and diacylglycerol (DAG) using calcium as a cofactor. IP3 and DAG are second messenger molecules important for transmitting signals from growth factor receptors and immune system receptors across the cell membrane. Mutations in this gene have been found in autoinflammation, antibody deficiency, and immune dysregulation syndrome and familial cold autoinflammatory syndrome 3.

Immunogen information

Gene ID:

5336

Uniprot

P16885

Synonyms:

PLCG2; APLAID; FCAS3; PLC-IV; PLC-gamma-2

Antibody Information

Recommended dilutions:

WB 1:500 - 1:2000 IHC 1:50
- 1:200 IF 1:20 - 1:100

Source:

Rabbit

Isotype:

IgG

Purification:

Affinity purification

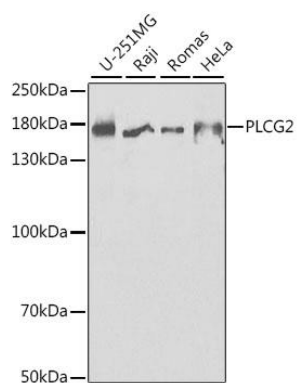
Immunogen:

Recombinant fusion protein containing a sequence corresponding to amino acids 1-300 of human PLCG2 (NP_002652.2).

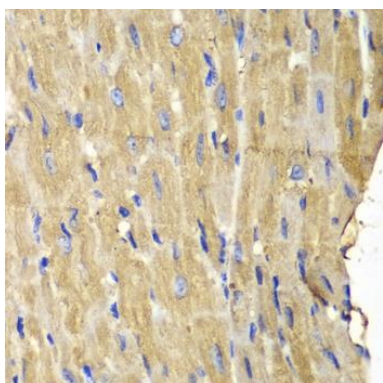
Storage:

Store at -20°C. Avoid freeze / thaw cycles. Buffer: PBS with 0.02% sodium azide, 50% glycerol, pH7.3.

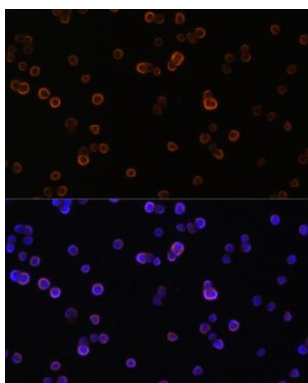
Product Images



Western blot analysis of extracts of various cell lines, using PLCG2 antibody (CAB2182) at 1:1000 dilution. Secondary antibody: HRP Goat Anti-Rabbit IgG (H+L) (CABS014) at 1:10000 dilution. Lysates/proteins: 25ug per lane. Blocking buffer: 3% nonfat dry milk in TBST.



Immunohistochemistry of paraffin-embedded mouse heart using PLCG2 antibody (CAB2182) at dilution of 1:100 (40x lens).



Immunofluorescence analysis of Raw264.7 cells using PLCG2 antibody (CAB2182) at dilution of 1:100. Blue: DAPI for nuclear staining.