

# PPP2R2A Rabbit Polyclonal Antibody



CAB2185

## Product Information

### Size:

20uL, 50uL, 100uL, 200uL

### Observed MW:

52kDa

### Calculated MW:

51kDa/53kDa

### Applications:

WB IHC

### Reactivity:

Human, Mouse, Rat

## Protein Background

The product of this gene belongs to the phosphatase 2 regulatory subunit B family. Protein phosphatase 2 is one of the four major Ser/Thr phosphatases, and it is implicated in the negative control of cell growth and division. It consists of a common heteromeric core enzyme, which is composed of a catalytic subunit and a constant regulatory subunit, that associates with a variety of regulatory subunits. The B regulatory subunit might modulate substrate selectivity and catalytic activity. This gene encodes an alpha isoform of the regulatory subunit B55 subfamily. Alternatively spliced transcript variants have been described.

## Immunogen information

### Gene ID:

5520

### Uniprot

P63151

### Synonyms:

PPP2R2A; B55A; B55ALPHA; PR52A; PR55A; PR55alpha

## Antibody Information

### Recommended dilutions:

WB 1:500 - 1:2000 IHC 1:50  
- 1:200

### Source:

Rabbit

### Isotype:

IgG

### Purification:

Affinity purification

### Immunogen:

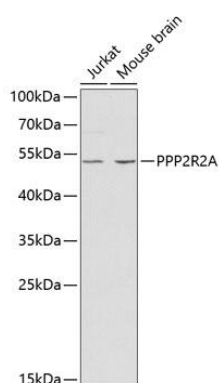
Recombinant fusion protein containing a sequence corresponding to amino acids 1-447 of human PPP2R2A (NP\_002708.1).

### Storage:

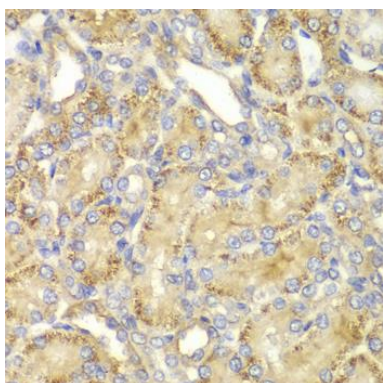
Store at -20°C. Avoid freeze / thaw cycles. Buffer: PBS with 0.02% sodium azide, 50% glycerol, pH7.3.

## Product Images

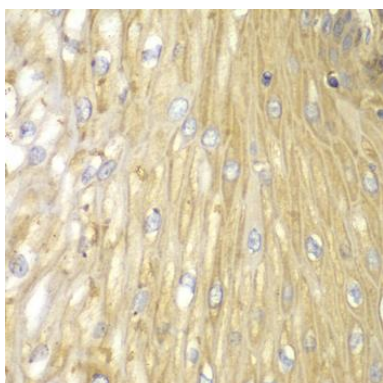
---



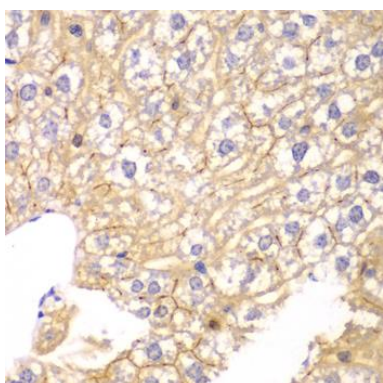
Western blot analysis of extracts of various cell lines, using PPP2R2A antibody (CAB2185) at 1:1000 dilution. Secondary antibody: HRP Goat Anti-Rabbit IgG (H+L) (CABS014) at 1:10000 dilution. Lysates/proteins: 25ug per lane. Blocking buffer: 3% nonfat dry milk in TBST.



Immunohistochemistry of paraffin-embedded rat kidney using PPP2R2A antibody (CAB2185) at dilution of 1:100 (40x lens).



Immunohistochemistry of paraffin-embedded human esophagus using PPP2R2A antibody (CAB2185) at dilution of 1:100 (40x lens).



Immunohistochemistry of paraffin-embedded mouse liver using PPP2R2A antibody (CAB2185) at dilution of 1:100 (40x lens).