

# MAP2K7 Rabbit Polyclonal Antibody



CAB2186

## Product Information

### Size:

20uL, 50uL, 100uL, 200uL

### Observed MW:

52kDa

### Calculated MW:

47kDa/48kDa/49kDa/51kDa

### Applications:

WB IF

### Reactivity:

Human, Mouse, Rat

## Antibody Information

### Recommended dilutions:

WB 1:500 - 1:2000 IF 1:50 - 1:200

### Source:

Rabbit

### Isotype:

IgG

### Purification:

Affinity purification

## Protein Background

The protein encoded by this gene is a dual specificity protein kinase that belongs to the MAP kinase kinase family. This kinase specifically activates MAPK8/JNK1 and MAPK9/JNK2, and this kinase itself is phosphorylated and activated by MAP kinase kinase kinases including MAP3K1/MEKK1, MAP3K2/MEKK2, MAP3K3/MEKK5, and MAP4K2/GCK. This kinase is involved in the signal transduction mediating the cell responses to proinflammatory cytokines, and environmental stresses. Alternative splicing results in multiple transcript variants.

## Immunogen information

### Gene ID:

5609

### Uniprot

O14733

### Synonyms:

MAP2K7; JNKK2; MAPKK7; MEK; MEK 7; MKK7; PRKMK7; SAPKK-4; SAPKK4; MEK7; MKK7

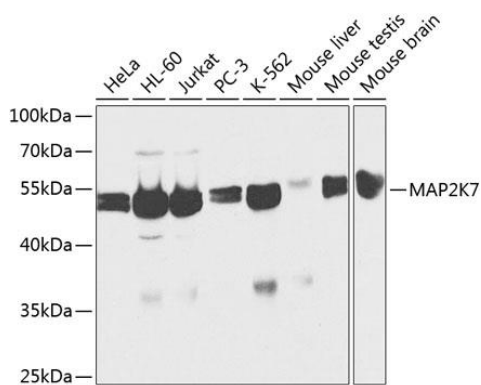
### Immunogen:

Recombinant fusion protein containing a sequence corresponding to amino acids 1-250 of human MAP2K7 (NP\_660186.1).

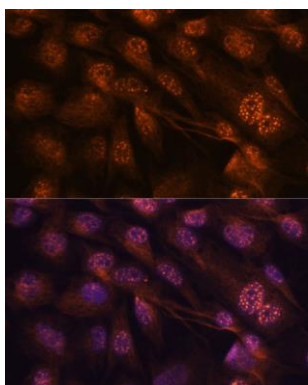
### Storage:

Store at -20°C. Avoid freeze / thaw cycles. Buffer: PBS with 0.02% sodium azide, 50% glycerol, pH7.3.

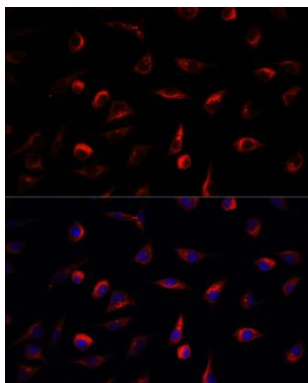
## Product Images



Western blot analysis of extracts of various cell lines, using MAP2K7 antibody (CAB2186) at 1:1000 dilution. Secondary antibody: HRP Goat Anti-Rabbit IgG (H+L) (CABS014) at 1:10000 dilution. Lysates/proteins: 25ug per lane. Blocking buffer: 3% nonfat dry milk in TBST.



Immunofluorescence analysis of C6 cells using MAP2K7 antibody (CAB2186) at dilution of 1:100. Blue: DAPI for nuclear staining.



Immunofluorescence analysis of L929 cells using MAP2K7 antibody (CAB2186) at dilution of 1:100. Blue: DAPI for nuclear staining.