

PSEN1 Rabbit Polyclonal Antibody



CAB2187

Product Information

Size:

20uL, 50uL, 100uL, 200uL

Observed MW:

52kDa

Calculated MW:

21kDa/42kDa/46kDa/48kDa/
52kDa

Applications:

WB IHC IF

Reactivity:

Human, Mouse, Rat

Antibody Information

Recommended dilutions:

WB 1:500 - 1:2000 IHC 1:50
- 1:200 IF 1:50 - 1:200

Source:

Rabbit

Isotype:

IgG

Purification:

Affinity purification

Protein Background

Alzheimer's disease (AD) patients with an inherited form of the disease carry mutations in the presenilin proteins (PSEN1; PSEN2) or in the amyloid precursor protein (APP). These disease-linked mutations result in increased production of the longer form of amyloid-beta (main component of amyloid deposits found in AD brains). Presenilins are postulated to regulate APP processing through their effects on gamma-secretase, an enzyme that cleaves APP. Also, it is thought that the presenilins are involved in the cleavage of the Notch receptor, such that they either directly regulate gamma-secretase activity or themselves are protease enzymes. Several alternatively spliced transcript variants encoding different isoforms have been identified for this gene, the full-length nature of only some have been determined.

Immunogen information

Gene ID:

5663

Uniprot

P49768

Synonyms:

AD3; FAD; PS-1; PS1; S182; Presenilin 1; PSEN1

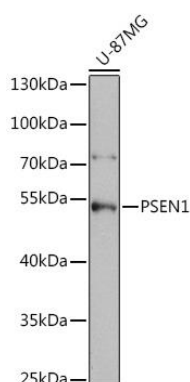
Immunogen:

Recombinant fusion protein containing a sequence corresponding to amino acids 1-160 of human PSEN1 (NP_015557.2).

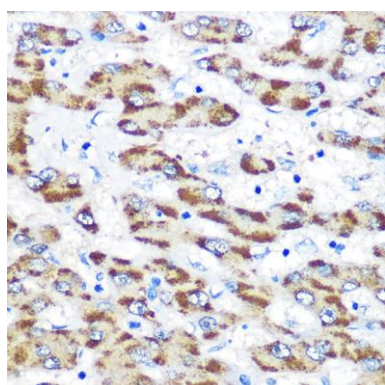
Storage:

Store at -20°C. Avoid freeze / thaw cycles. Buffer: PBS with 0.02% sodium azide, 50% glycerol, pH7.3.

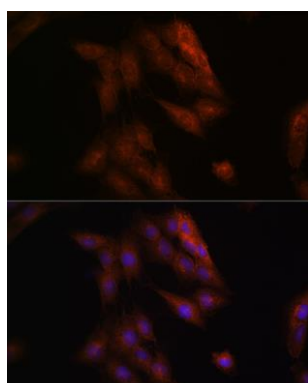
Product Images



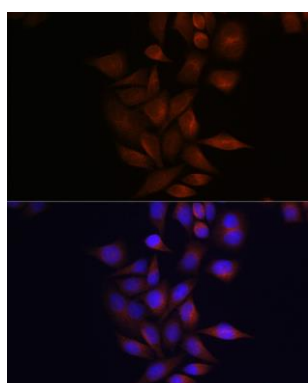
Western blot analysis of extracts of U-87MG cells, using PSEN1 antibody (CAB2187) at 1:1000 dilution. Secondary antibody: HRP Goat Anti-Rabbit IgG (H+L) (CABS014) at 1:10000 dilution. Lysates/proteins: 25ug per lane. Blocking buffer: 3% nonfat dry milk in TBST. Detection: ECL Enhanced Kit (CABM00021). Exposure time: 30s.



Immunohistochemistry of paraffin-embedded human liver using PSEN1 Rabbit pAb (CAB2187) at dilution of 1:100 (40x lens).



Immunofluorescence analysis of C6 cells using PSEN1 Rabbit pAb (CAB2187) at dilution of 1:100 (40x lens). Blue: DAPI for nuclear staining.



Immunofluorescence analysis of HeLa cells using PSEN1 Rabbit pAb (CAB2187) at dilution of 1:100 (40x lens). Blue: DAPI for nuclear staining.