

# SELE Rabbit Polyclonal Antibody



CAB2191

## Product Information

### Size:

20uL, 50uL, 100uL, 200uL

### Observed MW:

70kDa

### Calculated MW:

66kDa

### Applications:

WB IHC

### Reactivity:

Human, Mouse, Rat

## Antibody Information

### Recommended dilutions:

WB 1:500 - 1:2000 IHC 1:50  
- 1:200

### Source:

Rabbit

### Isotype:

IgG

### Purification:

Affinity purification

## Protein Background

The protein encoded by this gene is found in cytokine-stimulated endothelial cells and is thought to be responsible for the accumulation of blood leukocytes at sites of inflammation by mediating the adhesion of cells to the vascular lining. It exhibits structural features such as the presence of lectin- and EGF-like domains followed by short consensus repeat (SCR) domains that contain 6 conserved cysteine residues. These proteins are part of the selectin family of cell adhesion molecules. Adhesion molecules participate in the interaction between leukocytes and the endothelium and appear to be involved in the pathogenesis of atherosclerosis.

## Immunogen information

### Gene ID:

6401

### Uniprot

P16581

### Synonyms:

SELE; CD62E; ELAM; ELAM1; ESEL; LECAM2

### Immunogen:

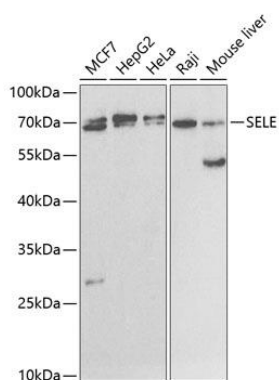
Recombinant fusion protein containing a sequence corresponding to amino acids 22-230 of human SELE (NP\_000441.2).

### Storage:

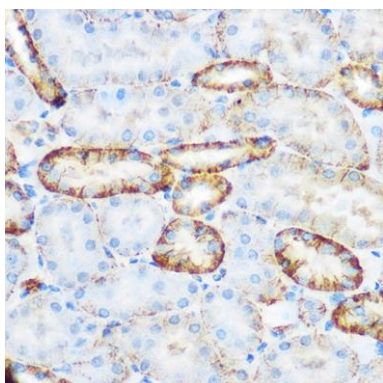
Store at -20°C. Avoid freeze / thaw cycles. Buffer: PBS with 0.02% sodium azide, 50% glycerol, pH7.3.

## Product Images

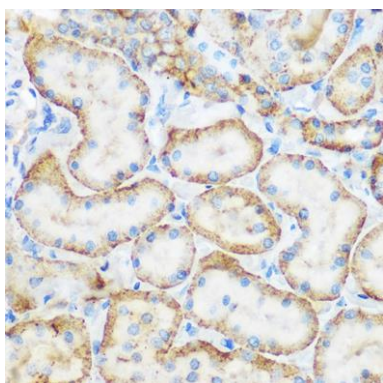
---



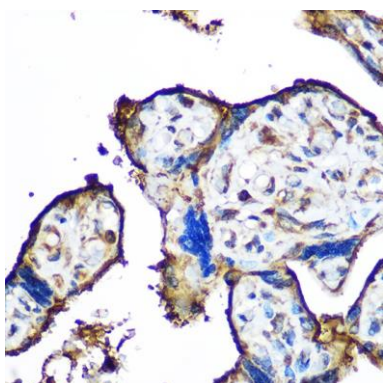
Western blot analysis of extracts of various cell lines, using SELE antibody (CAB2191) at 1:1000 dilution. Secondary antibody: HRP Goat Anti-Rabbit IgG (H+L) (CABS014) at 1:10000 dilution. Lysates/proteins: 25ug per lane. Blocking buffer: 3% nonfat dry milk in TBST.



Immunohistochemistry of paraffin-embedded mouse kidney using SELE Rabbit pAb (CAB2191) at dilution of 1:100 (40x lens).



Immunohistochemistry of paraffin-embedded rat kidney using SELE Rabbit pAb (CAB2191) at dilution of 1:100 (40x lens).



Immunohistochemistry of paraffin-embedded human placenta using SELE Rabbit pAb (CAB2191) at dilution of 1:100 (40x lens).