

DCTN2 Rabbit Polyclonal Antibody



CAB2200

Product Information

Size:

20uL, 50uL, 100uL, 200uL

Observed MW:

44kDa

Calculated MW:

44kDa

Applications:

WB IHC IF

Reactivity:

Human, Rat

Antibody Information

Recommended dilutions:

WB 1:500 - 1:2000 IHC 1:50
- 1:200 IF 1:20 - 1:50

Source:

Rabbit

Isotype:

IgG

Purification:

Affinity purification

Protein Background

This gene encodes a 50-kD subunit of dynactin, a macromolecular complex consisting of 10-11 subunits ranging in size from 22 to 150 kD. Dynactin binds to both microtubules and cytoplasmic dynein. It is involved in a diverse array of cellular functions, including ER-to-Golgi transport, the centripetal movement of lysosomes and endosomes, spindle formation, chromosome movement, nuclear positioning, and axonogenesis. This subunit is present in 4-5 copies per dynactin molecule. It contains three short alpha-helical coiled-coil domains that may mediate association with self or other dynactin subunits. It may interact directly with the largest subunit (p150) of dynactin and may affix p150 in place. Multiple alternatively spliced transcript variants encoding distinct isoforms have been found for this gene.

Immunogen information

Gene ID:

10540

Uniprot

Q13561

Synonyms:

DCTN2; DCTN50; DYNAMITIN; HEL-S-77; RBP50

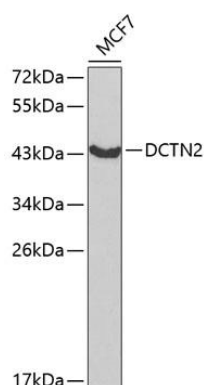
Immunogen:

Recombinant fusion protein containing a sequence corresponding to amino acids 50-320 of human DCTN2 (NP_006391.1).

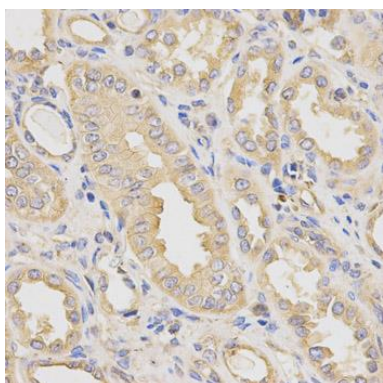
Storage:

Store at -20°C. Avoid freeze / thaw cycles. Buffer: PBS with 0.02% sodium azide, 50% glycerol, pH7.3.

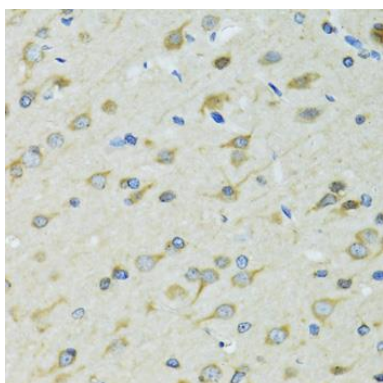
Product Images



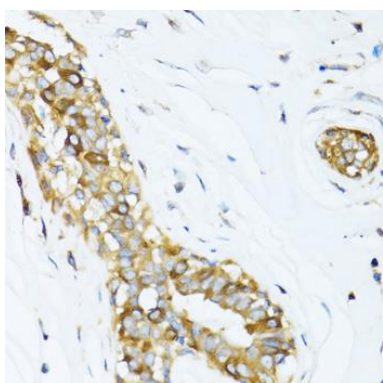
Western blot analysis of extracts of MCF-7 cells, using DCTN2 antibody (CAB2200) at 1:1000 dilution. Secondary antibody: HRP Goat Anti-Rabbit IgG (H+L) (CABS014) at 1:10000 dilution. Lysates/proteins: 25ug per lane. Blocking buffer: 3% nonfat dry milk in TBST.



Immunohistochemistry of paraffin-embedded human kidney using DCTN2 antibody (CAB2200) at dilution of 1:200 (40x lens).



Immunohistochemistry of paraffin-embedded rat brain using DCTN2 antibody (CAB2200) at dilution of 1:100 (40x lens).



Immunohistochemistry of paraffin-embedded human breast cancer using DCTN2 antibody (CAB2200) at dilution of 1:100 (40x lens).