

CD24 Rabbit Polyclonal Antibody



CAB2207

Product Information

Size:

20uL, 50uL, 100uL, 200uL

Observed MW:

45kDa/70kDa

Calculated MW:

8kDa

Applications:

WB, IHC

Reactivity:

Human, Mouse, Rat

Protein Background

This gene encodes a sialoglycoprotein that is expressed on mature granulocytes and B cells and modulates growth and differentiation signals to these cells. The precursor protein is cleaved to a short 32 amino acid mature peptide which is anchored via a glycosyl phosphatidylinositol (GPI) link to the cell surface. This gene was missing from previous genome assemblies, but is properly located on chromosome 6. Non-transcribed pseudogenes have been designated on chromosomes 1, 15, 20, and Y. Alternative splicing results in multiple transcript variants.

Immunogen information

Gene ID:

100133941

Uniprot

P25063

Synonyms:

CD24; CD24A; CD24 molecule; CD247

Antibody Information

Recommended dilutions:

WB 1:500 - 1:1000

IHC 1:50 - 1:100

Source:

Rabbit

Isotype:

IgG

Purification:

Affinity purification

Immunogen:

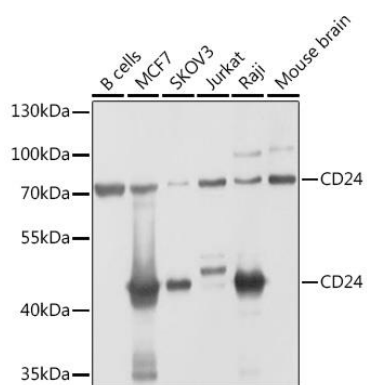
Recombinant fusion protein containing a sequence corresponding to amino acids 1-80 of human CD24 (NP_037362.1).

Storage:

Store at -20°C. Avoid freeze / thaw cycles.

Buffer: PBS with 0.02% sodium azide, 50% glycerol, pH7.3.

Product Images



Western blot analysis of extracts of various cell lines, using CD24 antibody (CAB2207) at 1:1000 dilution.

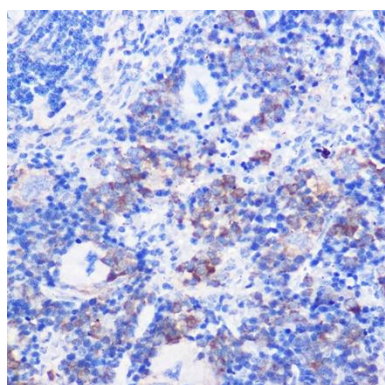
Secondary antibody: HRP Goat Anti-Rabbit IgG (H+L) (CABS014) at 1:10000 dilution.

Lysates/proteins: 25ug per lane.

Blocking buffer: 3% non-fat dry milk in TBST.

Detection: ECL Basic Kit (AbGn00020).

Exposure time: 10s.



Immunohistochemistry of paraffin-embedded mouse spleen using CD24 Rabbit pAb (CAB2207) at dilution of 1:100 (40x lens).