

MYST1 Rabbit Polyclonal Antibody



CAB2208

Product Information

Size:

20uL, 50uL, 100uL, 200uL

Observed MW:

58kDa

Calculated MW:

52kDa/53kDa

Applications:

WB IF

Reactivity:

Human, Mouse, Rat

Antibody Information

Recommended dilutions:

WB 1:500 - 1:2000 IF 1:100
- 1:200

Source:

Rabbit

Isotype:

IgG

Purification:

Affinity purification

Protein Background

This gene encodes a member of the MYST histone acetylase protein family. The encoded protein has a characteristic MYST domain containing an acetyl-CoA-binding site, a chromodomain typical of proteins which bind histones, and a C2HC-type zinc finger. Multiple transcript variants encoding different isoforms have been found for this gene.

Immunogen information

Gene ID:

84148

Uniprot

Q9H7Z6

Synonyms:

KAT8; MOF; MYST1; ZC2HC8; hMOF

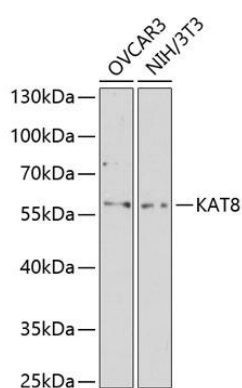
Immunogen:

Recombinant fusion protein containing a sequence corresponding to amino acids 1-200 of human MYST1 (NP_892003.2).

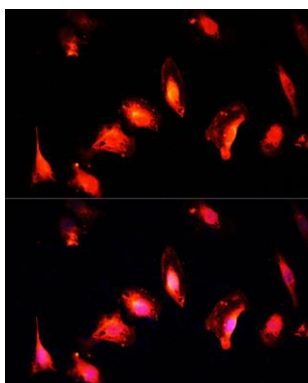
Storage:

Store at -20°C. Avoid freeze / thaw cycles. Buffer: PBS with 0.02% sodium azide, 50% glycerol, pH7.3.

Product Images



Western blot analysis of extracts of various cell lines, using KAT8 antibody (CAB2208) at 1:3000 dilution. Secondary antibody: HRP Goat Anti-Rabbit IgG (H+L) (CABS014) at 1:10000 dilution. Lysates/proteins: 25ug per lane. Blocking buffer: 3% nonfat dry milk in TBST. Detection: ECL Enhanced Kit (CABM00021). Exposure time: 90s.



Immunofluorescence analysis of U-2 OS cells using MYST1 Polyclonal Antibody (CAB2208) at dilution of 1:100 (40x lens). Blue: DAPI for nuclear staining.