

CUX1 Rabbit Polyclonal Antibody



CAB2213

Product Information

Size:

20uL, 50uL, 100uL, 200uL

Observed MW:

90kDa/110kDa/250kDa

Calculated MW:

72-77kDa/147-165kDa

Applications:

WB IF

Reactivity:

Human, Mouse, Rat

Antibody Information

Recommended dilutions:

WB 1:1000 - 1:2000 IF 1:50
- 1:200

Source:

Rabbit

Isotype:

IgG

Purification:

Affinity purification

Protein Background

The protein encoded by this gene is a member of the homeodomain family of DNA binding proteins. It may regulate gene expression, morphogenesis, and differentiation and it may also play a role in the cell cycle progression. Several alternatively spliced transcript variants encoding different isoforms have been identified.

Immunogen information

Gene ID:

1523

Uniprot

P39880/Q13948

Synonyms:

CUX1; CASP; CDP; CDP/Cut; CDP1; COY1; CUTL1; CUX; Clox;
Cux/CDP; GOLIM6; Nbla10317; p100; p110; p200; p75

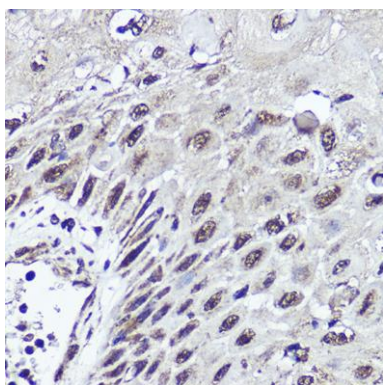
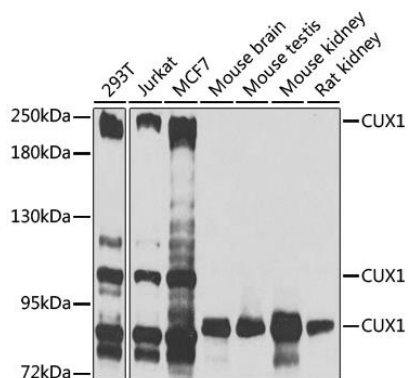
Immunogen:

Recombinant fusion protein containing a sequence corresponding to amino acids 1-280 of human CUX1 (NP_001189472.1).

Storage:

Store at -20°C. Avoid freeze / thaw cycles. Buffer: PBS with 0.02% sodium azide, 50% glycerol, pH7.3.

Product Images



Western blot analysis of extracts of various cell lines, using CUX1 antibody (CAB2213) at 1:1000 dilution. Secondary antibody: HRP Goat Anti-Rabbit IgG (H+L) (CABS014) at 1:10000 dilution. Lysates/proteins: 25ug per lane. Blocking buffer: 3% nonfat dry milk in TBST. Detection: ECL Basic Kit (CABM00020). Exposure time: 30s.

Immunofluorescence analysis of C6 cells using CUX1 antibody (CAB2213) at dilution of 1:100. Blue: DAPI for nuclear staining.