

# OGT Rabbit Polyclonal Antibody



CAB2214

---

## Product Information

### Size:

20uL, 50uL, 100uL, 200uL

### Observed MW:

117kDa

### Calculated MW:

74kDa/103kDa/115kDa/116kDa

### Applications:

WB IHC

### Reactivity:

Human, Mouse, Rat

## Protein Background

This gene encodes a glycosyltransferase that catalyzes the addition of a single N-acetylglucosamine in O-glycosidic linkage to serine or threonine residues. Since both phosphorylation and glycosylation compete for similar serine or threonine residues, the two processes may compete for sites, or they may alter the substrate specificity of nearby sites by steric or electrostatic effects. The protein contains multiple tetratricopeptide repeats that are required for optimal recognition of substrates. Alternatively spliced transcript variants encoding distinct isoforms have been found for this gene.

## Immunogen information

### Gene ID:

8473

### Uniprot

O15294

### Synonyms:

OGT; HINCUT-1; HRNT1; O-GLCNAC; MRX106; OGT1

## Antibody Information

### Recommended dilutions:

WB 1:500 - 1:2000 IHC 1:50 - 1:200

### Source:

Rabbit

### Isotype:

IgG

### Purification:

Affinity purification

### Immunogen:

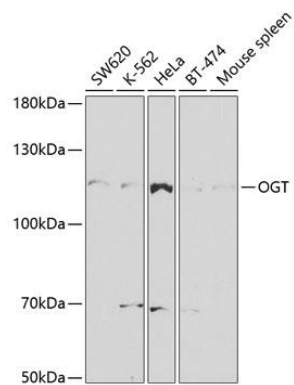
Recombinant fusion protein containing a sequence corresponding to amino acids 857-1036 of human OGT (NP\_858059.1).

### Storage:

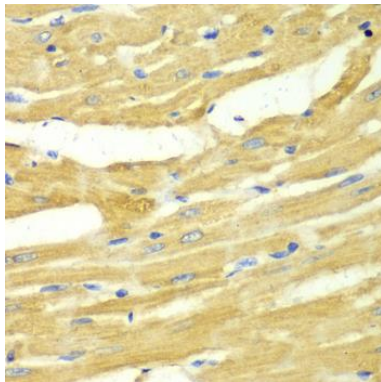
Store at -20°C. Avoid freeze / thaw cycles. Buffer: PBS with 0.02% sodium azide, 50% glycerol, pH7.3.

## Product Images

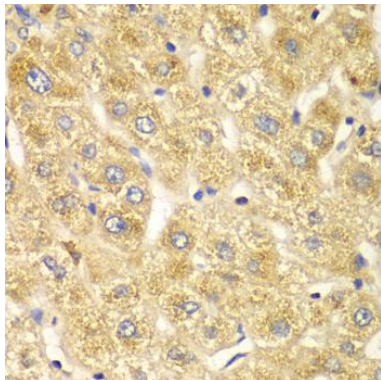
---



Western blot analysis of extracts of various cell lines, using OGT antibody (CAB2214) at 1:1000 dilution. Secondary antibody: HRP Goat Anti-Rabbit IgG (H+L) (CABS014) at 1:10000 dilution. Lysates/proteins: 25ug per lane. Blocking buffer: 3% nonfat dry milk in TBST. Detection: ECL Basic Kit (CABM00020). Exposure time: 90s.



Immunohistochemistry of paraffin-embedded rat heart using OGT antibody (CAB2214) at dilution of 1:100 (40x lens).



Immunohistochemistry of paraffin-embedded human liver damage using OGT antibody (CAB2214) at dilution of 1:100 (40x lens).