

ITGB1 Rabbit Polyclonal Antibody



CAB2217

Product Information

Size:

20uL, 50uL, 100uL, 200uL

Observed MW:

100-135kDa

Calculated MW:

87kDa/88kDa/91kDa

Applications:

WB IF

Reactivity:

Human, Mouse

Antibody Information

Recommended dilutions:

WB 1:500 - 1:2000 IF 1:50 - 1:200

Source:

Rabbit

Isotype:

IgG

Purification:

Affinity purification

Protein Background

Integrins are heterodimeric proteins made up of alpha and beta subunits. At least 18 alpha and 8 beta subunits have been described in mammals. Integrin family members are membrane receptors involved in cell adhesion and recognition in a variety of processes including embryogenesis, hemostasis, tissue repair, immune response and metastatic diffusion of tumor cells. This gene encodes a beta subunit. Multiple alternatively spliced transcript variants which encode different protein isoforms have been found for this gene.

Immunogen information

Gene ID:

3688

Uniprot

P05556

Synonyms:

CD29; FNRB; GPIIA; MDF2; MSK12; VLA-BETA; VLAB; Integrin beta 1; ITGB1; Integrin Beta 1

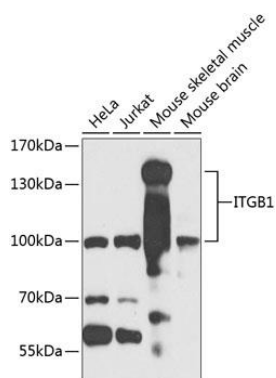
Immunogen:

A synthetic peptide corresponding to a sequence within amino acids 600-700 of human ITGB1 (NP_391988.1).

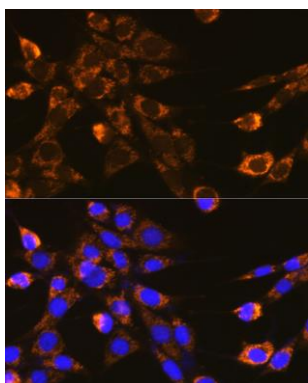
Storage:

Store at -20°C. Avoid freeze / thaw cycles. Buffer: PBS with 0.02% sodium azide, 50% glycerol, pH7.3.

Product Images



Western blot analysis of extracts of various cell lines, using ITGB1 antibody (CAB2217) at 1:1000 dilution. Secondary antibody: HRP Goat Anti-Rabbit IgG (H+L) (CABS014) at 1:10000 dilution. Lysates/proteins: 25ug per lane. Blocking buffer: 3% nonfat dry milk in TBST. Detection: ECL Basic Kit (CABM00020). Exposure time: 90s.



Immunofluorescence analysis of NIH-3T3 cells using ITGB1 Rabbit pAb (CAB2217) at dilution of 1:100 (40x lens). Blue: DAPI for nuclear staining.