

# CHD3 Rabbit Polyclonal Antibody



CAB2221

## Product Information

### Size:

20uL, 50uL, 100uL, 200uL

### Observed MW:

280kDa

### Calculated MW:

222kDa/226kDa/233kDa

### Applications:

WB

### Reactivity:

Human, Mouse, Rat

## Antibody Information

### Recommended dilutions:

WB 1:200 - 1:1000

### Source:

Rabbit

### Isotype:

IgG

### Purification:

Affinity purification

## Protein Background

This gene encodes a member of the CHD family of proteins which are characterized by the presence of chromo (chromatin organization modifier) domains and SNF2-related helicase/ATPase domains. This protein is one of the components of a histone deacetylase complex referred to as the Mi-2/NuRD complex which participates in the remodeling of chromatin by deacetylating histones. Chromatin remodeling is essential for many processes including transcription. Autoantibodies against this protein are found in a subset of patients with dermatomyositis. Three alternatively spliced transcripts encoding different isoforms have been described.

## Immunogen information

### Gene ID:

1107

### Uniprot

Q12873

### Synonyms:

CHD3; Mi-2a; Mi2-ALPHA; ZFH

### Immunogen:

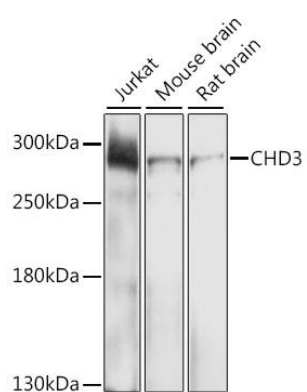
A synthetic peptide corresponding to a sequence within amino acids 1900-2000 of human CHD3 (NP\_001005273.1).

### Storage:

Store at -20°C. Avoid freeze / thaw cycles. Buffer: PBS with 0.02% sodium azide, 50% glycerol, pH7.3.

## Product Images

---



Western blot analysis of extracts of various cell lines, using CHD3 antibody (CAB2221) at 1:1000 dilution. Secondary antibody: HRP Goat Anti-Rabbit IgG (H+L) (CABS014) at 1:10000 dilution. Lysates/proteins: 25ug per lane. Blocking buffer: 3% nonfat dry milk in TBST. Detection: ECL Enhanced Kit (CABM00021). Exposure time: 30s.