

KAT2A Rabbit Polyclonal Antibody



CAB2224

Product Information

Size:

20uL, 50uL, 100uL, 200uL

Observed MW:

110kDa

Calculated MW:

94kDa

Applications:

WB IHC IF

Reactivity:

Human, Mouse, Rat

Antibody Information

Recommended dilutions:

WB 1:200 - 1:2000 IHC 1:50
- 1:200 IF 1:50 - 1:200

Source:

Rabbit

Isotype:

IgG

Purification:

Affinity purification

Protein Background

Immunogen information

Gene ID:

2648

Uniprot

Q92830

Synonyms:

KAT2A; GCN5; GCN5L2; PCAF-b; hGCN5

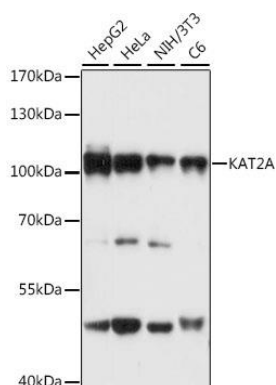
Immunogen:

Recombinant fusion protein containing a sequence corresponding to amino acids 1-100 of human KAT2A (NP_066564.2).

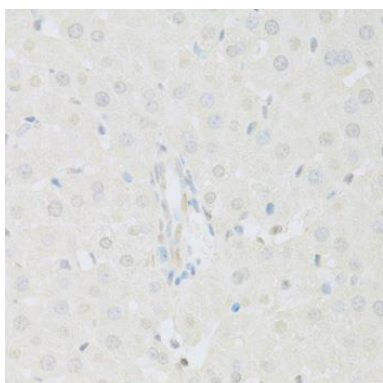
Storage:

Store at -20°C. Avoid freeze / thaw cycles. Buffer: PBS with 0.02% sodium azide, 50% glycerol, pH7.3.

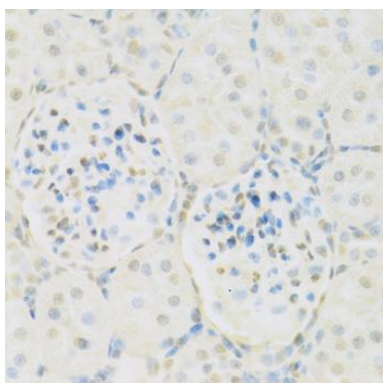
Product Images



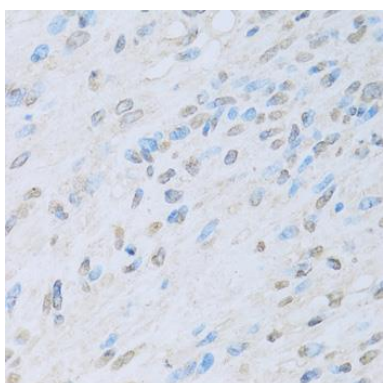
Western blot analysis of extracts of various cell lines, using KAT2A antibody (CAB2224) at 1:3000 dilution. Secondary antibody: HRP Goat Anti-Rabbit IgG (H+L) (CABS014) at 1:10000 dilution. Lysates/proteins: 25ug per lane. Blocking buffer: 3% nonfat dry milk in TBST. Detection: ECL Basic Kit (CABM00020). Exposure time: 1s.



Immunohistochemistry of paraffin-embedded rat liver using KAT2A antibody (CAB2224) at dilution of 1:100 (40x lens).



Immunohistochemistry of paraffin-embedded rat kidney using KAT2A antibody (CAB2224) at dilution of 1:100 (40x lens).



Immunohistochemistry of paraffin-embedded human liver cancer using KAT2A antibody (CAB2224) at dilution of 1:100 (40x lens).