

# REST Rabbit Polyclonal Antibody



CAB2230

---

## Product Information

### Size:

20uL, 50uL, 100uL, 200uL

### Observed MW:

### Calculated MW:

35kDa/36kDa/119kDa/121kDa

### Applications:

IF

### Reactivity:

Human

## Antibody Information

### Recommended dilutions:

IF 1:50 - 1:200

### Source:

Rabbit

### Isotype:

IgG

### Purification:

Affinity purification

## Protein Background

This gene encodes a transcriptional repressor that represses neuronal genes in non-neuronal tissues. It is a member of the Kruppel-type zinc finger transcription factor family. It represses transcription by binding a DNA sequence element called the neuron-restrictive silencer element. The protein is also found in undifferentiated neuronal progenitor cells and it is thought that this repressor may act as a master negative regulator of neurogenesis. Alternatively spliced transcript variants have been described

## Immunogen information

### Gene ID:

5978

### Uniprot

Q13127

### Synonyms:

REST; NRSF; WT6; XBR

### Immunogen:

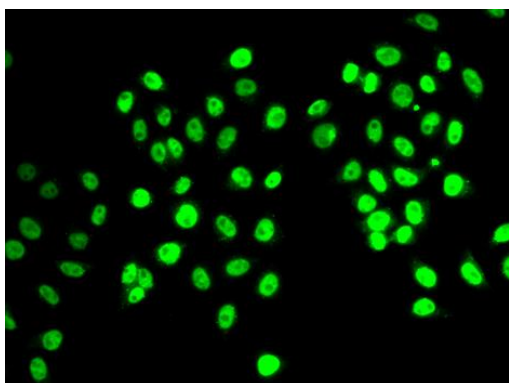
Recombinant fusion protein containing a sequence corresponding to amino acids 760-1060 of human REST (NP\_001180437.1).

### Storage:

Store at -20°C. Avoid freeze / thaw cycles. Buffer: PBS with 0.02% sodium azide, 50% glycerol, pH7.3.

## Product Images

---



Immunofluorescence analysis of MCF-7 cells using REST antibody (CAB2230).