

TRIM28 Rabbit Polyclonal Antibody



CAB2245

Product Information

Size:

20uL, 50uL, 100uL, 200uL

Observed MW:

120kDa

Calculated MW:

79kDa/88kDa

Applications:

WB IHC IF

Reactivity:

Human, Mouse, Rat

Protein Background

The protein encoded by this gene mediates transcriptional control by interaction with the Kruppel-associated box repression domain found in many transcription factors. The protein localizes to the nucleus and is thought to associate with specific chromatin regions. The protein is a member of the tripartite motif family. This tripartite motif includes three zinc-binding domains, a RING, a B-box type 1 and a B-box type 2, and a coiled-coil region.

Immunogen information

Gene ID:

10155

Uniprot

Q13263

Synonyms:

KAP1; PPP1R157; RNF96; TF1B; TIF1B; TRIM28

Antibody Information

Recommended dilutions:

WB 1:1000 - 1:3000 IHC

1:100 - 1:200 IF 1:50 -

1:200

Source:

Rabbit

Isotype:

IgG

Purification:

Affinity purification

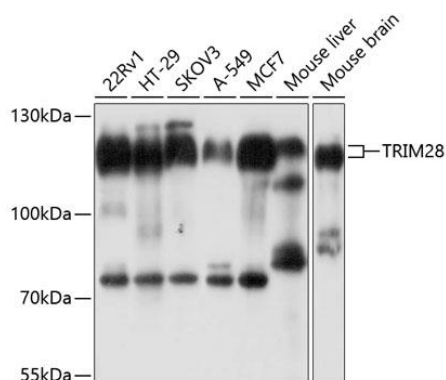
Immunogen:

Recombinant fusion protein containing a sequence corresponding to amino acids 576-835 of human TRIM28 (NP_005753.1).

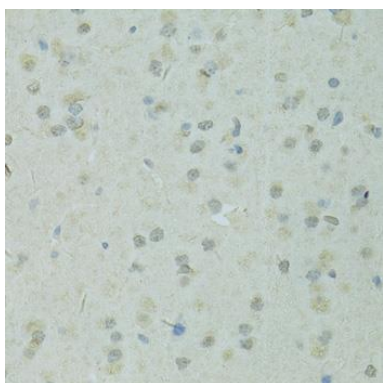
Storage:

Store at -20°C. Avoid freeze / thaw cycles. Buffer: PBS with 0.02% sodium azide, 50% glycerol, pH7.3.

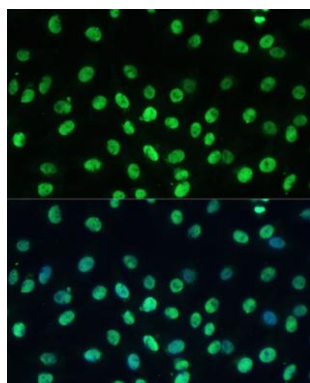
Product Images



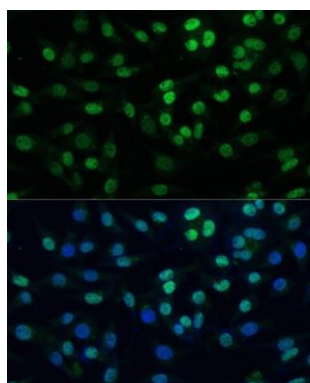
Western blot analysis of extracts of various cell lines, using TRIM28 antibody (CAB2245) at 1:1000 dilution. Secondary antibody: HRP Goat Anti-Rabbit IgG (H+L) (CABS014) at 1:10000 dilution. Lysates/proteins: 25ug per lane. Blocking buffer: 3% nonfat dry milk in TBST. Detection: ECL Basic Kit (CABM00020). Exposure time: 5s.



Immunohistochemistry of paraffin-embedded rat brain using TRIM28 antibody (CAB2245) at dilution of 1:100 (40x lens).



Immunofluorescence analysis of C6 cells using TRIM28 Polyclonal Antibody (CAB2245) at dilution of 1:100 (40x lens). Blue: DAPI for nuclear staining.



Immunofluorescence analysis of L929 cells using TRIM28 Polyclonal Antibody (CAB2245) at dilution of 1:100 (40x lens). Blue: DAPI for nuclear staining.