

CBX1 Rabbit Polyclonal Antibody



CAB2247

Product Information

Size:

20uL, 50uL, 100uL, 200uL

Observed MW:

21kDa

Calculated MW:

21kDa

Applications:

WB IHC

Reactivity:

Human

Protein Background

This gene encodes a highly conserved nonhistone protein, which is a member of the heterochromatin protein family. The protein is enriched in the heterochromatin and associated with centromeres. The protein has a single N-terminal chromodomain which can bind to histone proteins via methylated lysine residues, and a C-terminal chromo shadow-domain (CSD) which is responsible for the homodimerization and interaction with a number of chromatin-associated nonhistone proteins. The protein may play an important role in the epigenetic control of chromatin structure and gene expression. Several related pseudogenes are located on chromosomes 1, 3, and X. Multiple alternatively spliced variants, encoding the same protein, have been identified.

Immunogen information

Gene ID:

10951

Uniprot

P83916

Antibody Information

Recommended dilutions:

WB 1:500 - 1:1000 IHC 1:50
- 1:100

Source:

Rabbit

Isotype:

IgG

Purification:

Affinity purification

Synonyms:

CBX1; CBX; HP1-BETA; HP1Hs-beta; HP1Hsbeta; M31; MOD1;
p25beta

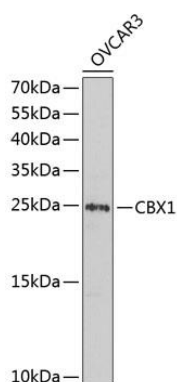
Immunogen:

Recombinant fusion protein containing a sequence corresponding to amino acids 1-185 of human CBX1 (NP_006798.1).

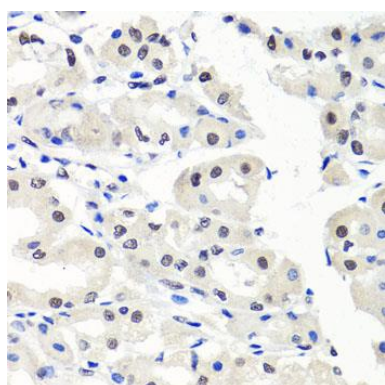
Storage:

Store at -20°C. Avoid freeze / thaw cycles. Buffer: PBS with 0.02% sodium azide, 50% glycerol, pH7.3.

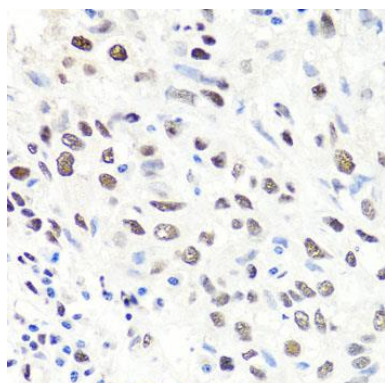
Product Images



Western blot analysis of extracts of OVCAR-3 cells, using CBX1 antibody (CAB2247) at 1:1000 dilution. Secondary antibody: HRP Goat Anti-Rabbit IgG (H+L) (CABS014) at 1:10000 dilution. Lysates/proteins: 25ug per lane. Blocking buffer: 3% nonfat dry milk in TBST. Detection: ECL Basic Kit (CABM00020). Exposure time: 30s.



Immunohistochemistry of paraffin-embedded human stomach using CBX1 antibody (CAB2247) at dilution of 1:100 (40x lens).



Immunohistochemistry of paraffin-embedded human lung cancer using CBX1 antibody (CAB2247) at dilution of 1:100 (40x lens).