

[KO Validated] CBX3 Rabbit Polyclonal Antibody



CAB2248

Product Information

Size:

20uL, 50uL, 100uL, 200uL

Observed MW:

23kDa

Calculated MW:

20kDa

Applications:

WB IHC IF

Reactivity:

Human, Mouse, Rat

Antibody Information

Recommended dilutions:

WB 1:500 - 1:2000 IHC 1:50
- 1:200 IF 1:50 - 1:200

Source:

Rabbit

Isotype:

IgG

Purification:

Affinity purification

Protein Background

At the nuclear envelope, the nuclear lamina and heterochromatin are adjacent to the inner nuclear membrane. The protein encoded by this gene binds DNA and is a component of heterochromatin. This protein also can bind lamin B receptor, an integral membrane protein found in the inner nuclear membrane. The dual binding functions of the encoded protein may explain the association of heterochromatin with the inner nuclear membrane. This protein binds histone H3 tails methylated at Lys-9 sites. This protein is also recruited to sites of ultraviolet-induced DNA damage and double-strand breaks. Two transcript variants encoding the same protein but differing in the 5' UTR, have been found for this gene.

Immunogen information

Gene ID:

11335

Uniprot

Q13185

Synonyms:

CBX3; HECH; HP1-GAMMA; HP1Hs-gamma

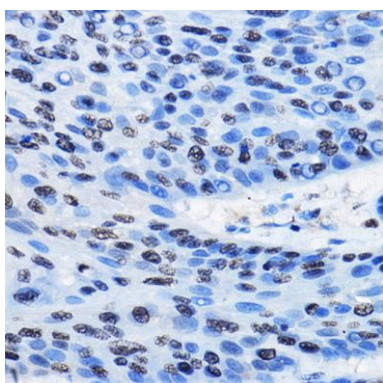
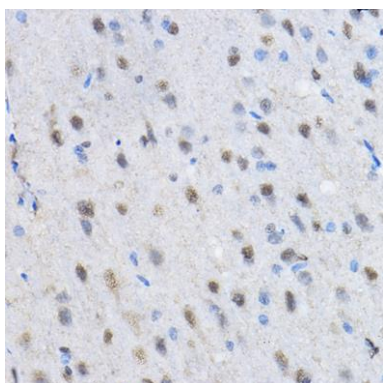
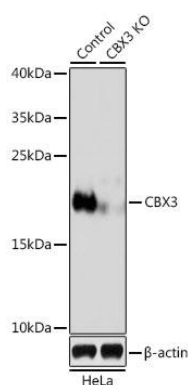
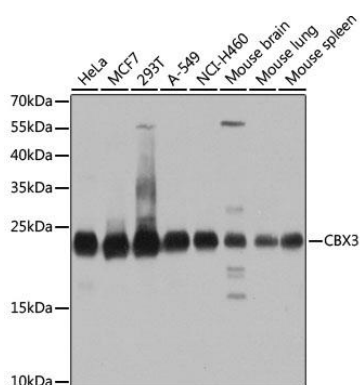
Immunogen:

Recombinant fusion protein containing a sequence corresponding to amino acids 1-183 of human CBX3 (NP_009207.2).

Storage:

Store at -20°C. Avoid freeze / thaw cycles. Buffer: PBS with 0.02% sodium azide, 50% glycerol, pH7.3.

Product Images



Western blot analysis of extracts of various cell lines, using CBX3 antibody (CAB2248) at 1:1000 dilution. Secondary antibody: HRP Goat Anti-Rabbit IgG (H+L) (CABS014) at 1:10000 dilution. Lysates/proteins: 25ug per lane. Blocking buffer: 3% nonfat dry milk in TBST. Detection: ECL Basic Kit (CABM00020). Exposure time: 5s.

Western blot analysis of extracts from normal (control) and CBX3 knockout (KO) HeLa cells, using CBX3 antibody (CAB2248) at 1:500 dilution. Secondary antibody: HRP Goat Anti-Rabbit IgG (H+L) (CABS014) at 1:10000 dilution. Lysates/proteins: 25ug per lane. Blocking buffer: 3% nonfat dry milk in TBST. Detection: ECL Basic Kit (CABM00020). Exposure time: 1s.

Immunohistochemistry of paraffin-embedded rat brain using [KO Validated] CBX3 Rabbit pAb (CAB2248) at dilution of 1:50 (40x lens).

Immunohistochemistry of paraffin-embedded human esophageal cancer using [KO Validated] CBX3 Rabbit pAb (CAB2248) at dilution of 1:50 (40x lens).