

LEPREL2 Rabbit Polyclonal Antibody



CAB2293

Product Information

Size:

20uL, 50uL, 100uL, 200uL

Observed MW:

Calculated MW:

62kDa/81kDa

Applications:

IHC

Reactivity:

Mouse, Rat

Antibody Information

Recommended dilutions:

IHC 1:50 - 1:200

Source:

Rabbit

Isotype:

IgG

Purification:

Affinity purification

Protein Background

The protein encoded by this gene belongs to the leprecan family of proteoglycans, which function as collagen prolyl hydroxylases that are required for proper collagen biosynthesis, folding and assembly. This protein, like other family members, is thought to reside in the endoplasmic reticulum. Epigenetic inactivation of this gene is associated with breast and other cancers, suggesting that it may function as a tumor suppressor.

Immunogen information

Gene ID:

10536

Uniprot

Q8IVL6

Synonyms:

P3H3; GRCB; HSU47926; LEPREL2

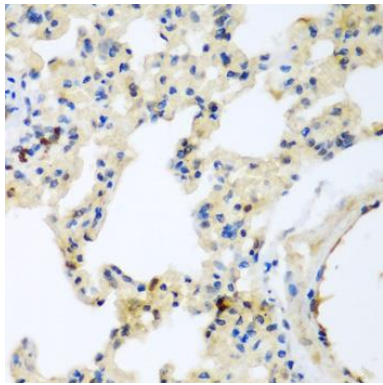
Immunogen:

Recombinant fusion protein containing a sequence corresponding to amino acids 487-736 of human LEPREL2 (NP_055077.2).

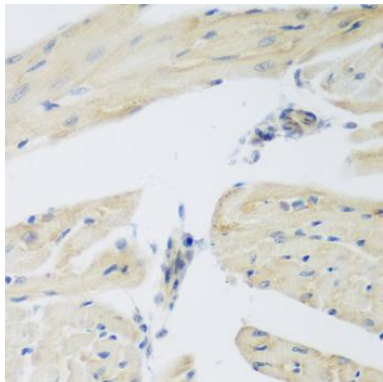
Storage:

Store at -20°C. Avoid freeze / thaw cycles. Buffer: PBS with 0.02% sodium azide, 50% glycerol, pH7.3.

Product Images



Immunohistochemistry of paraffin-embedded rat lung using LEPREL2 antibody (CAB2293) at dilution of 1:200 (40x lens).



Immunohistochemistry of paraffin-embedded mouse heart using LEPREL2 antibody (CAB2293) at dilution of 1:200 (40x lens).