

SETD1B Rabbit Polyclonal Antibody



CAB2300

Product Information

Size:

50uL, 100uL

Observed MW:

263kDa

Calculated MW:

208kDa/212kDa

Applications:

WB IHC IF IP

Reactivity:

Human, Mouse

Antibody Information

Recommended dilutions:

WB 1:200 - 1:2000 IHC
1:50- 1:200 IF 1:50- 1:200
IP 1:20- 1:50

Source:

Rabbit

Isotype:

IgG

Purification:

Affinity purification

Protein Background

SET1B is a component of a histone methyltransferase complex that produces trimethylated histone H3 at Lys4 (Lee et al., 2007 [PubMed 17355966]).[supplied by OMIM, Mar 2008]

Immunogen information

Gene ID:

23067

Uniprot

Q9UPS6

Synonyms:

SETD1B; KMT2G; Set1B

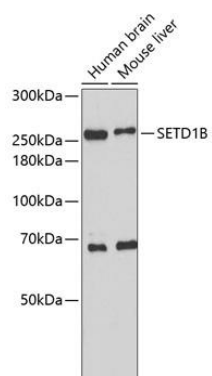
Immunogen:

Recombinant protein of human SETD1B

Storage:

Store at -20°C. Avoid freeze / thaw cycles. Buffer: PBS with 0.02% sodium azide, 50% glycerol, pH7.3.

Product Images



Western blot analysis of extracts of various cell lines, using SETD1B antibody (CAB2300). Secondary antibody: HRP Goat Anti-Rabbit IgG (H+L) (CABS014) at 1:10000 dilution. Lysates/proteins: 25ug per lane. Blocking buffer: 3% nonfat dry milk in TBST.