

GCN2 Rabbit Monoclonal Antibody



CAB2307

Product Information

Size:

20uL, 50uL, 100uL, 200uL

Observed MW:

220kDa

Calculated MW:

187kDa

Applications:

WB

Reactivity:

Human

Protein Background

This gene encodes a member of a family of kinases that phosphorylate the alpha subunit of eukaryotic translation initiation factor-2 (EIF2), resulting in the downregulation of protein synthesis. The encoded protein responds to amino acid deprivation by binding uncharged transfer RNAs. It may also be activated by glucose deprivation and viral infection. Mutations in this gene have been found in individuals suffering from autosomal recessive pulmonary venoocclusive-disease-2. [provided by RefSeq, Mar 2014]

Immunogen information

Gene ID:

440275

Uniprot

Q9P2K8

Synonyms:

GCN2; PVOD2

Antibody Information

Recommended dilutions:

WB 1:500 - 1:2000

Source:

Rabbit

Isotype:

IgG

Purification:

Affinity purification

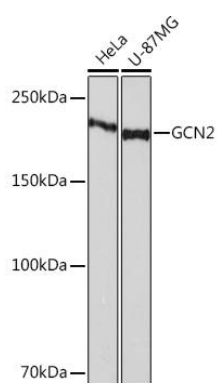
Immunogen:

A synthesized peptide derived from human GCN2

Storage:

Store at -20°C. Avoid freeze / thaw cycles. Buffer: PBS with 0.02% sodium azide, 0.05% BSA, 50% glycerol, pH7.3.

Product Images



Western blot - GCN2 Rabbit mAb (CAB2307)