

WHSC1L1 Rabbit Polyclonal Antibody



CAB2317

Product Information

Size:

100uL, 200uL

Observed MW:

85kDa

Calculated MW:

72kDa/154kDa/156kDa/160kDa/161kDa

Applications:

WB

Reactivity:

Human, Mouse

Antibody Information

Recommended dilutions:

WB 1:200 - 1:2000

Source:

Rabbit

Isotype:

IgG

Purification:

Affinity purification

Protein Background

This gene is related to the Wolf-Hirschhorn syndrome candidate-1 gene and encodes a protein with PWWP (proline-tryptophan-tryptophan-proline) domains. This protein methylates histone H3 at lysine residues 4 and 27, which represses gene transcription. Two alternatively spliced variants have been described.

Immunogen information

Gene ID:

54904

Uniprot

Q9BZ95

Synonyms:

NSD3; KMT3F; KMT3G; WHISTLE; WHSC1L1; pp14328

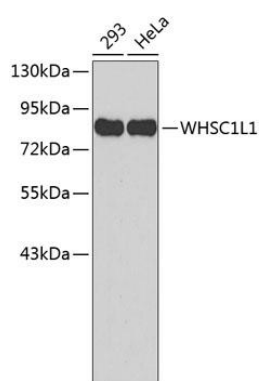
Immunogen:

A synthetic peptide of human WHSC1L1

Storage:

Store at -20°C. Avoid freeze / thaw cycles. Buffer: PBS with 0.02% sodium azide, 50% glycerol, pH7.3.

Product Images



Western blot analysis of extracts of various cell lines, using WHSC1L1 antibody (CAB2317). Secondary antibody: HRP Goat Anti-Rabbit IgG (H+L) (CABS014) at 1:10000 dilution. Lysates/proteins: 25ug per lane. Blocking buffer: 3% nonfat dry milk in TBST.