

# KDM3A Rabbit Polyclonal Antibody



CAB2322

---

## Product Information

### Size:

20uL, 50uL, 100uL, 200uL

### Observed MW:

157kDa

### Calculated MW:

147kDa

### Applications:

WB

### Reactivity:

Human, Mouse, Rat

## Antibody Information

### Recommended dilutions:

WB 1:500 - 1:2000

### Source:

Rabbit

### Isotype:

IgG

### Purification:

Affinity purification

## Protein Background

This gene encodes a zinc finger protein that contains a jumonji domain and may play a role in hormone-dependent transcriptional activation. Alternative splicing results in multiple transcript variants.

## Immunogen information

### Gene ID:

55818

### Uniprot

Q9Y4C1

### Synonyms:

KDM3A; JHDM2A; JHMD2A; JMJD1; JMJD1A; TSGA

### Immunogen:

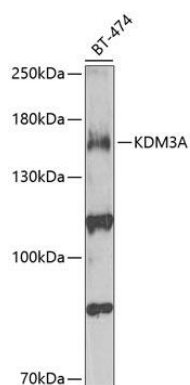
Recombinant fusion protein containing a sequence corresponding to amino acids 1-300 of human KDM3A (NP\_060903.2).

### Storage:

Store at -20°C. Avoid freeze / thaw cycles. Buffer: PBS with 0.02% sodium azide, 50% glycerol, pH7.3.

## Product Images

---



Western blot analysis of extracts of BT-474 cells, using KDM3A antibody (CAB2322) at 1:1000 dilution. Secondary antibody: HRP Goat Anti-Rabbit IgG (H+L) (CABS014) at 1:10000 dilution. Lysates/proteins: 25ug per lane. Blocking buffer: 3% nonfat dry milk in TBST. Detection: ECL Enhanced Kit (CABM00021). Exposure time: 30s.