

MTA3 Rabbit Polyclonal Antibody



CAB2328

Product Information

Size:

20uL, 50uL, 100uL, 200uL

Observed MW:

67kDa

Calculated MW:

58kDa/67kDa

Applications:

WB

Reactivity:

Human, Mouse

Antibody Information

Recommended dilutions:

WB 1:500 - 1:2000

Source:

Rabbit

Isotype:

IgG

Purification:

Affinity purification

Protein Background

Immunogen information

Gene ID:

57504

Uniprot

Q9BTC8

Synonyms:

MTA3

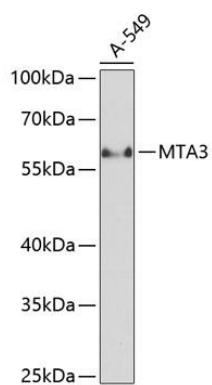
Immunogen:

Recombinant fusion protein containing a sequence corresponding to amino acids 40-330 of human MTA3 (NP_065795.1).

Storage:

Store at -20°C. Avoid freeze / thaw cycles. Buffer: PBS with 0.02% sodium azide, 50% glycerol, pH7.3.

Product Images



Western blot analysis of extracts of A-549 cells, using MTA3 antibody (CAB2328) at 1:1000 dilution. Secondary antibody: HRP Goat Anti-Rabbit IgG (H+L) (CABS014) at 1:10000 dilution. Lysates/proteins: 25ug per lane. Blocking buffer: 3% nonfat dry milk in TBST. Detection: ECL Basic Kit (CABM00020). Exposure time: 30s.