

PD-L2/CD273 Monoclonal Antibody

CAB23287



Product Information

Product SKU:

CAB23287

Gene ID:

80380

Observed MW:

45-60kDa

Calculated MW:

31kDa

Category:

Primary Antibody

Uniprot:

Q9BQ51

Reactivity:

Human, Mouse, Rat

Purification Method:

Affinity purification

Source:

Rabbit

Isotype:

IgG

Immunogen information

Background:

Involved in negative regulation of activated T cell proliferation; negative regulation of interferon-gamma production; and negative regulation of interleukin-10 production. Predicted to be located in plasma membrane. Predicted to be active in external side of plasma membrane. Biomarker of pulmonary tuberculosis.

Size:

20uL, 50uL, 100uL

Applications:

Western blotting Immunohistochemistry

Synonyms:

B7DC; Btdc; PDL2; CD273; PD-L2; PDCD1L2; bA574F11.2; PD-L2/CD273

Immunogen:

Recombinant protein of human PD-L2/CD273.

Recommended Dilution:

WB 1:500 - 1:1000 IHC-P 1:50 - 1:200

Storage:

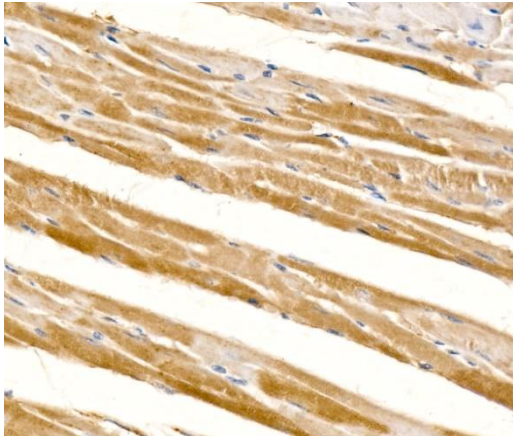
Store at -20°C. Avoid freeze / thaw cycles. Buffer: PBS with 0.05% proclin300, 0.05% BSA, 50% glycerol, pH7.3.

Contact Details | Dublin, Ireland

Email: techsupport@assaygenie.com | Web: www.assaygenie.com

Copyright © 2020 Reagent Genie, All Rights Reserved. All information / detail is correct at time of going to print.

Validation Data



Immunohistochemistry analysis of paraffin-embedded mouse heart using PD-L2/CD273 Rabbit mAb (A23287) at dilution of 1:100 (40x lens). Perform high pressure antigen retrieval with 10 mM citrate buffer pH 6.0 before commencing with IHC staining protocol.

Contact Details | Dublin, Ireland

Email: techsupport@assaygenie.com | **Web:** www.assaygenie.com

Copyright © 2020 Reagent Genie, All Rights Reserved. All information / detail is correct at time of going to print.