

Histone H3 Rabbit Polyclonal Antibody



CAB2352

Product Information

Size:

20uL, 50uL, 100uL, 200uL

Observed MW:

17kDa

Calculated MW:

15kDa

Applications:

WB IHC IP

Reactivity:

Human, Mouse, Rat, Other
(Wide Range)

Antibody Information

Recommended dilutions:

WB 1:500 - 1:2000 IHC 1:50
- 1:200 IP 1:20 - 1:50

Source:

Rabbit

Isotype:

IgG

Purification:

Affinity purification

Protein Background

Histones are basic nuclear proteins that are responsible for the nucleosome structure of the chromosomal fiber in eukaryotes. Nucleosomes consist of approximately 146 bp of DNA wrapped around a histone octamer composed of pairs of each of the four core histones (H2A, H2B, H3, and H4). The chromatin fiber is further compacted through the interaction of a linker histone, H1, with the DNA between the nucleosomes to form higher order chromatin structures. This gene is intronless and encodes a replication-dependent histone that is a member of the histone H3 family. Transcripts from this gene lack polyA tails; instead, they contain a palindromic termination element. This gene is located separately from the other H3 genes that are in the histone gene cluster on chromosome 6p22-p21.3.

Immunogen information

Gene ID:

8290

Uniprot

Q16695

Synonyms:

H3.4; H3/g; H3FT; H3t; HIST3H3; Histone H3; HIST1H3A

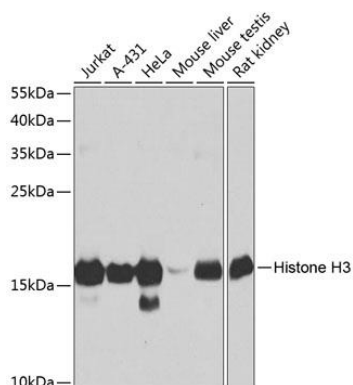
Immunogen:

A synthetic peptide corresponding to a sequence within amino acids 50 to the C-terminus of human HIST3H3 (NP_003484.1).

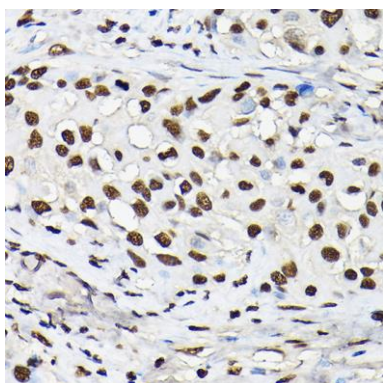
Storage:

Store at -20°C. Avoid freeze / thaw cycles. Buffer: PBS with 0.02% sodium azide, 50% glycerol, pH7.3.

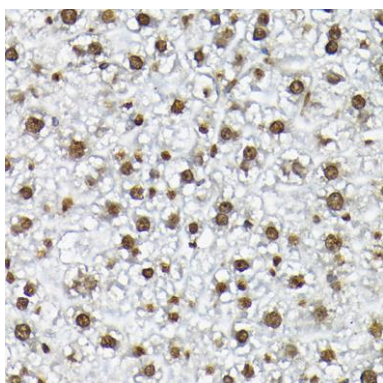
Product Images



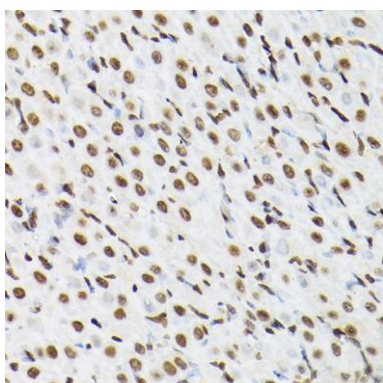
Western blot analysis of extracts of various cell lines, using Histone H3 antibody (CAB2352) at 1:1000 dilution. Secondary antibody: HRP Goat Anti-Rabbit IgG (H+L) (CABS014) at 1:10000 dilution. Lysates/proteins: 25ug per lane. Blocking buffer: 3% nonfat dry milk in TBST. Detection: ECL Basic Kit (CABM00020). Exposure time: 10s.



Immunohistochemistry of paraffin-embedded human breast cancer using Histone H3 Rabbit pAb (CAB2352) at dilution of 1:25 (40x lens).



Immunohistochemistry of paraffin-embedded mouse liver using Histone H3 Rabbit pAb (CAB2352) at dilution of 1:25 (40x lens).



Immunohistochemistry of paraffin-embedded rat ovary using Histone H3 Rabbit pAb (CAB2352) at dilution of 1:25 (40x lens).