

Pan Acetyl-Lysine Rabbit Polyclonal Antibody



CAB2391

Product Information

Size:

20uL, 50uL, 100uL, 200uL

Observed MW:

Refer to figures

Calculated MW:

Applications:

WB IP

Reactivity:

Human, Mouse, Rat, Other
(Wide Range)

Antibody Information

Recommended dilutions:

WB 1:500 - 1:1000 IP 1:20 -
1:50

Source:

Rabbit

Isotype:

IgG

Purification:

Affinity purification

Protein Background

Immunogen information

Gene ID:

Uniprot

Synonyms:

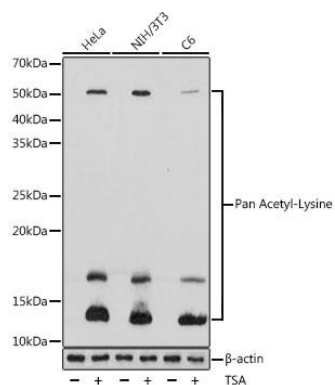
Immunogen:

A synthetic peptide corresponding to a sequence containing acetylated K.

Storage:

Store at -20°C. Avoid freeze / thaw cycles. Buffer: PBS with 0.02% sodium azide, 50% glycerol, pH7.3.

Product Images



Western blot analysis of extracts of various cell lines, using Pan Acetyl-Lysine antibody (CAB2391) at 1:1000 dilution. HeLa cells and NIH/3T3 cells and C6 cells were treated by TSA (1 uM) at 37°C for 18 hours. Secondary antibody: HRP Goat Anti-Rabbit IgG (H+L) (CABS014) at 1:10000 dilution. Lysates/proteins: 25ug per lane. Blocking buffer: 3% BSA. Detection: ECL Basic Kit (CABM00020). Exposure time: 1s.