

HEC1 Rabbit Monoclonal Antibody



CAB2392

Product Information

Size:

20uL, 50uL, 100uL, 200uL

Observed MW:

76KDa

Calculated MW:

74kDa

Applications:

WB

Reactivity:

Human

Protein Background

This gene encodes a component of the NDC80 kinetochore complex. The encoded protein consists of an N-terminal microtubule binding domain and a C-terminal coiled-coiled domain that interacts with other components of the complex. This protein functions to organize and stabilize microtubule-kinetochore interactions and is required for proper chromosome segregation. [provided by RefSeq, Oct 2011]

Immunogen information

Gene ID:

10403

Uniprot

O14777

Synonyms:

HEC; HEC1; HsHec1; KNTC2; TID3; hsNDC80

Antibody Information

Recommended dilutions:

WB 1:500 - 1:2000

Source:

Rabbit

Isotype:

IgG

Purification:

Affinity purification

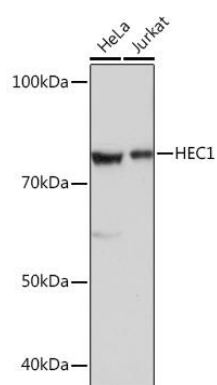
Immunogen:

A synthesized peptide derived from human HEC1

Storage:

Store at -20°C. Avoid freeze / thaw cycles. Buffer: PBS with 0.02% sodium azide, 0.05% BSA, 50% glycerol, pH7.3.

Product Images



Western blot - HEC1 Rabbit mAb (CAB2392)