

ROCK2 Rabbit Monoclonal Antibody



CAB2395

Product Information

Size:

20uL, 50uL, 100uL, 200uL

Observed MW:

160KDa

Calculated MW:

161kDa

Applications:

WB IHC

Reactivity:

Human, Mouse, Rat

Protein Background

The protein encoded by this gene is a serine/threonine kinase that regulates cytokinesis, smooth muscle contraction, the formation of actin stress fibers and focal adhesions, and the activation of the c-fos serum response element. This protein, which is an isozyme of ROCK1 is a target for the small GTPase Rho. [provided by RefSeq, Jul 2008]

Immunogen information

Gene ID:

9475

Uniprot

O75116

Synonyms:

ROCK-II

Antibody Information

Recommended dilutions:

WB 1:500 - 1:2000 IHC

1:50 - 1:200

Source:

Rabbit

Immunogen:

A synthesized peptide derived from human ROCK2

Storage:

Store at -20°C. Avoid freeze / thaw cycles. Buffer: PBS with 0.02% sodium azide, 0.05% BSA, 50% glycerol, pH7.3.

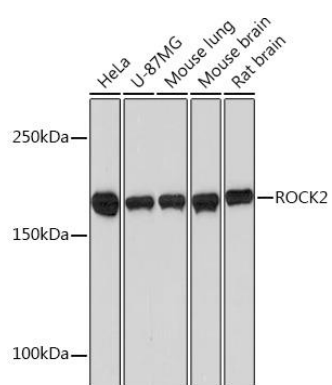
Isotype:

IgG

Purification:

Affinity purification

Product Images



Western blot - ROCK2 Rabbit mAb (CAB2395)